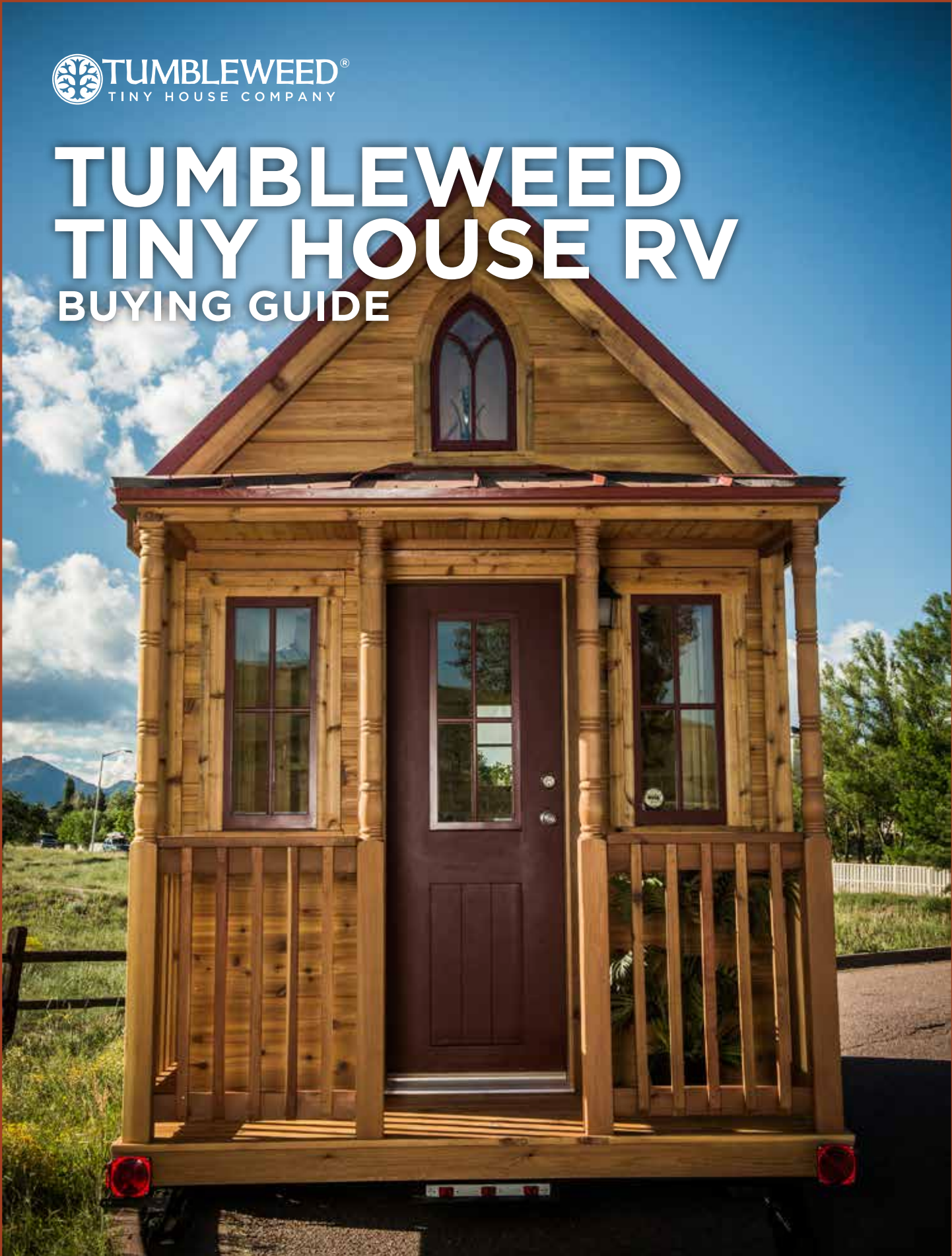




TUMBLEWEED TINY HOUSE RV BUYING GUIDE





TUMBLEWEED[®]
TINY HOUSE COMPANY

HOW TO USE THIS BOOK

INTRODUCING TUMBLEWEED'S TINY HOUSE RV BUYING GUIDE

Congratulations! If you're looking at this guide, it means you're taking your first step towards having the Tiny House RV of your dreams! This catalog is designed to outline all of the options we offer. We build it how you want it. At Tumbleweed, we are committed to building (tiny house RV's) outfitted to each customer's personal lifestyle. Flip through these pages to view detailed models, floor plans and specifications on towing, plumbing, appliances and much more. As always, if you have any questions please feel free to email us at: support@tumbleweedhouses.com.

WHAT DO ALL THESE BOXES MEAN?

We've organized this guide to be user-friendly and to offer you an at a glance list of included amenities. If you see a green check box () this is to inform you that this item is included in all our models. If you see a gray box () this is a standard option, which will be chosen if no selection is made. The empty box () is where you make a decision or choose to upgrade. In some cases this decision will override the standard option. If cost is associated, it will be listed.



DISC LIGHT (INCLUDED)

Disc lights are found throughout the Farallon™ and the Roanoke™ models. The simple circular shapes goes beautifully with the modern feel of both Tiny House RVs.



CHANDELIER (STANDARD)

The contemporary Elysburg 3-Light satin nickel chandelier will cast a blanket of light over your great room and flawlessly match the sconces.



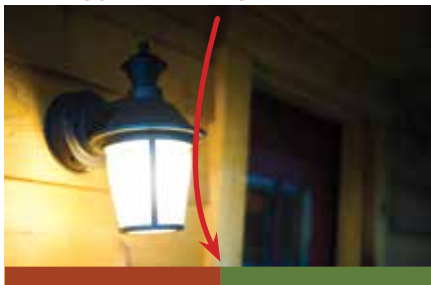
CEILING FAN (\$150)

Increase air circulation with the Monte Carlo Colony II 28" ceiling fan and light, which replaces the chandelier and fits perfectly within your charming roof line.

WHAT ABOUT THOSE COLORED LINES?

Tumbleweed offers four models and with that comes some unique options. Some options are universal and you will see all four color lines under the specific options while others are dependent on style, floor plan, or model. This key can be found throughout the book: ■ Elm® ■ Cypress® ■ Farallon™ ■ Roanoke™

Light is available in the Elm® and Cypress® Only



LIGHT (INCLUDED)

Modern Light is available in the Farallon™ and Roanoke™ Only



MODERN LIGHTS (\$750)

Front steps are available in all Tumbleweed® models.



FRONT STEPS (\$200)



TUMBLEWEED TINY HOUSE COMPANY[®]

The year was 1999 when our first “tiny home” was mounted to a trailer. The little home was named Tumbleweed because it had roots and was mobile all at the same time. And in that moment, the seeds for a revolution were planted.

TABLE OF CONTENTS

Tumbleweed Quality	5-6
Models	7-10
Understanding Floor Plans	11-18
Exterior Options	19-30
Interior Options	31-46
Kitchen Options	47-58
Bathroom Options	59-62
Sleeping Options	63-68
Utility Options	69-74
Elm[®] Floor Plans	76-77
Cypress[®] Floor Plans	78-79
Farallon[™] Floor Plans	80-81
Roanoke[™] Floor Plans	82-83
Towing	85
Delivery	86
Financing Chart	87

Questions? Please feel free to email us at: support@tumbleweedhouses.com.

WHY TUMBLEWEED?

Our Tiny House RVs are carefully crafted and made from the same high quality materials that you’d find in regular home with quality construction. We’ve perfected our design for 15 years, and we care about each and every one of our Tiny House RVs and the people residing in them.

WHERE CAN I PUT IT?

Our RVs are certified to meet ANSI 119.2 and Federal Motor Vehicle Safety Standards, which means they can be parked at an RV park or campground. Many Tumbleweed owners use their Tiny House RVs as additional spaces and place them in their backyards or properties.

WHY WHEELS?

Despite their charming look, in the end a Tumbleweed is a Recreational Vehicle. The wheels are permanently attached and the Tumbleweed is easily towed on the roads. As a vehicle, it is designed to provide temporary accommodation for recreation, camping or seasonal use.

IS FINANCING AVAILABLE?

Yes. There are 8 different classes of RVs and Tumbleweeds fall into the “Travel Trailer” class which is one of the easiest to finance. We work with a variety of lenders to find the best loan for you. If you decide to apply for a loan, we recommend you contact us first.

CAN I GET IT DELIVERED?

Tiny House RVs can be delivered right to your front door, anywhere in the continental United States (shipping charges apply).



TUMBLEWEED QUALITY

TUMBLEWEED QUALITY MADE

We put our whole heart into every inch of our Tiny Home RVs. Our professional carpenters use only the highest quality materials and construct every detail to fulfill your specific needs, ensuring your RV fits comfortably within your lifestyle.

TUMBLEWEED QUALITY SPECS

- Tumbleweed Trailer™
- Stabilizing jacks
- All thread rods
- Radial tires
- Cedar, oak and pine wood
- 2x4 wall framing
- Sheathing: OSB zipboard
- Main floor: ¾" tongue and groove subfloor
- Loft: ¾" tongue and groove
- AC breaker panel
- DC panel
- Insulation: R-20 formaldehyde free, Icynene spray in polyurethane
- Ring shank nails and screws
- Simpson strong ties
- Hurricane and rafter clips
- Moen fixtures
- Flojet water pump
- PEX water lines
- 10 gallon water heater
- 1-yr Workmanship & Materials
- Original Appliance & Material Warranties Applicable
- Travel Trailer
- Certified RV

✔ TUMBLEWEED TRAILER™ (INCLUDED)

We've designed the best Tiny House RV trailer on the market, extending your head space by three inches and ensuring your Tumbleweed will be safe and secure on the road.





TUMBLEWEED CLASSIC MODELS



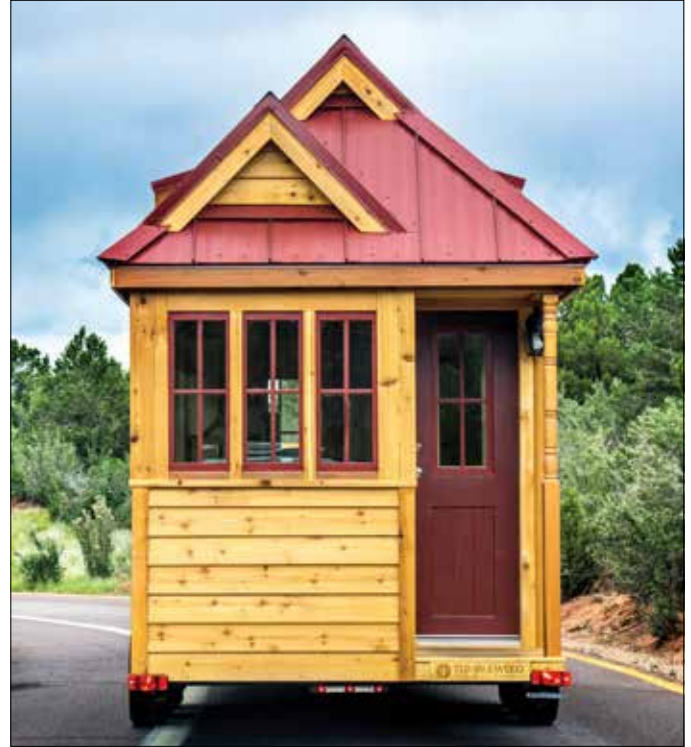
ELM® MODEL

The iconic Elm® is modeled off of the very first Tumbleweed. Featuring a functional full porch, an emblematic lancet window and a supreme use of symmetry showcased in its eye-popping entry. This classic Tumbleweed has withstood the test of time. Tiny House RV dormers included in all models.

SPECS

Width	7'6"
Interior Width	6'8"
Lengths	20' / 26'
Ceiling Height	6'6"
Loft Height	3'6"
Dry Weight	8,000-10,500
GVWR	10,000-15,000
Truck Size	¾ to 1 Ton

- ELM® 20'** (\$62,950 + \$299 D&H Fee)
\$425/mo*
- ELM® 26'** (\$72,950 + \$299 D&H Fee)
\$492/mo*



CYPRESS® MODEL

The alluring Cypress® is the epitome of beauty and function. The sweeping bay windows, proportional corner porch, hipped roof and clever use of rhythm within the design offer an aesthetic that has led to the overwhelming popularity of this Tumbleweed. Tiny House RV dormers included in all models.

SPECS

Width	7'6"
Interior Width	6'8"
Lengths	20' / 26'
Ceiling Height	6'6"
Loft Height	3'6"
Dry Weight	8,000-10,500
GVWR	10,000-15,000
Truck Size	¾ to 1 Ton

- CYPRESS® 20'** (\$62,950 + \$299 D&H Fee)
\$425/mo*
- CYPRESS® 26'** (\$72,950 + \$299 D&H Fee)
\$492/mo*

*Based on 20% down with 6% APR for 15 years. Interest rates and terms vary in accordance with your lender and credit score.



TUMBLEWEED MODERN MODELS



FARALLON™ MODEL

The Farallon™ synthesizes modern aesthetics and traditional farmhouse form with a rich palette of materials. It introduces some new materials, style, and appliances while keeping the high level of quality craftsmanship for which Tumbleweed builders are known.

SPECS	
Width	8'6"
Interior Width	7'7"
Lengths	20' / 26'
Ceiling Height	6'6"
Loft Height	3'4"
Dry Weight	8,800-12,500
GVWR	10,000-15,000
Truck Size	¾ to 1 Ton

- FARALLON™ 20'** (\$62,950 + \$299 D&H Fee)
\$425/mo*
- FARALLON™ 26'** (\$72,950 + \$299 D&H Fee)
\$492/mo*



ROANOKE™ MODEL

The Roanoke™ is one of Tumbleweed's newest model, designed for the Low-Wider trailer and featuring a shed style roof. Inside, the open floor plan combines kitchen and living under 10 foot ceilings giving the interior a spacious feel.

SPECS	
Width	8'6"
Interior Width	7'7"
Lengths	20' / 26'
Ceiling Height	6'6"
Loft Height	3'10"
Dry Weight	8,800-12,500
GVWR	10,000-15,000
Truck Size	¾ to 1 Ton

- ROANOKE™ 20'** (\$62,950 + \$299 D&H Fee)
\$425/mo*
- ROANOKE™ 26'** (\$72,950 + \$299 D&H Fee)
\$492/mo*

*Based on 20% down with 6% APR for 15 years. Interest rates and terms vary in accordance with your lender and credit score.

UNDERSTANDING FLOOR PLANS

GETTING TO KNOW OUR FLOOR PLANS

We take pride in every detail of our Tiny House RVs. From the ground up we make sure you are getting the highest quality products, materials and builders, ensuring they are safe, reliable and fit your individual needs.



Alta floor plan featuring the great room leading into the kitchen



Overlook floor plan kitchen in back of model



Horizon floor plan bathroom



Farallon™ 26 loft



Cypress® Equator downstairs bedroom

■ Elm® ■ Cypress® ■ Farallon™ ■ Roanoke™

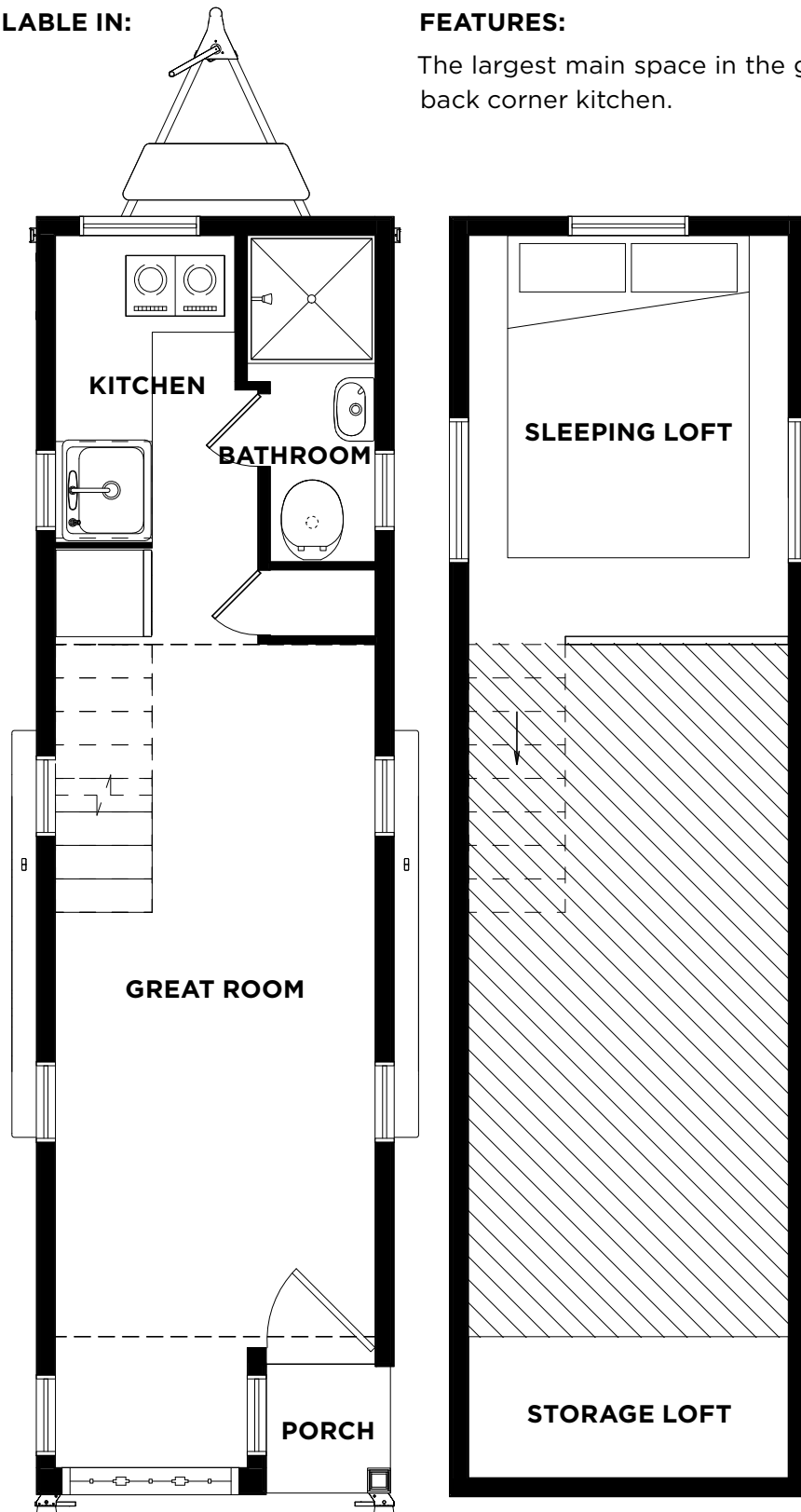
OVERLOOK FLOOR PLAN

MODEL(S) AVAILABLE IN:

Cypress® 20, 26
Elm® 20, 26

FEATURES:

The largest main space in the great room and a back corner kitchen.



Shown: Cypress® 26 Overlook
All Floor Plans pgs 76-83

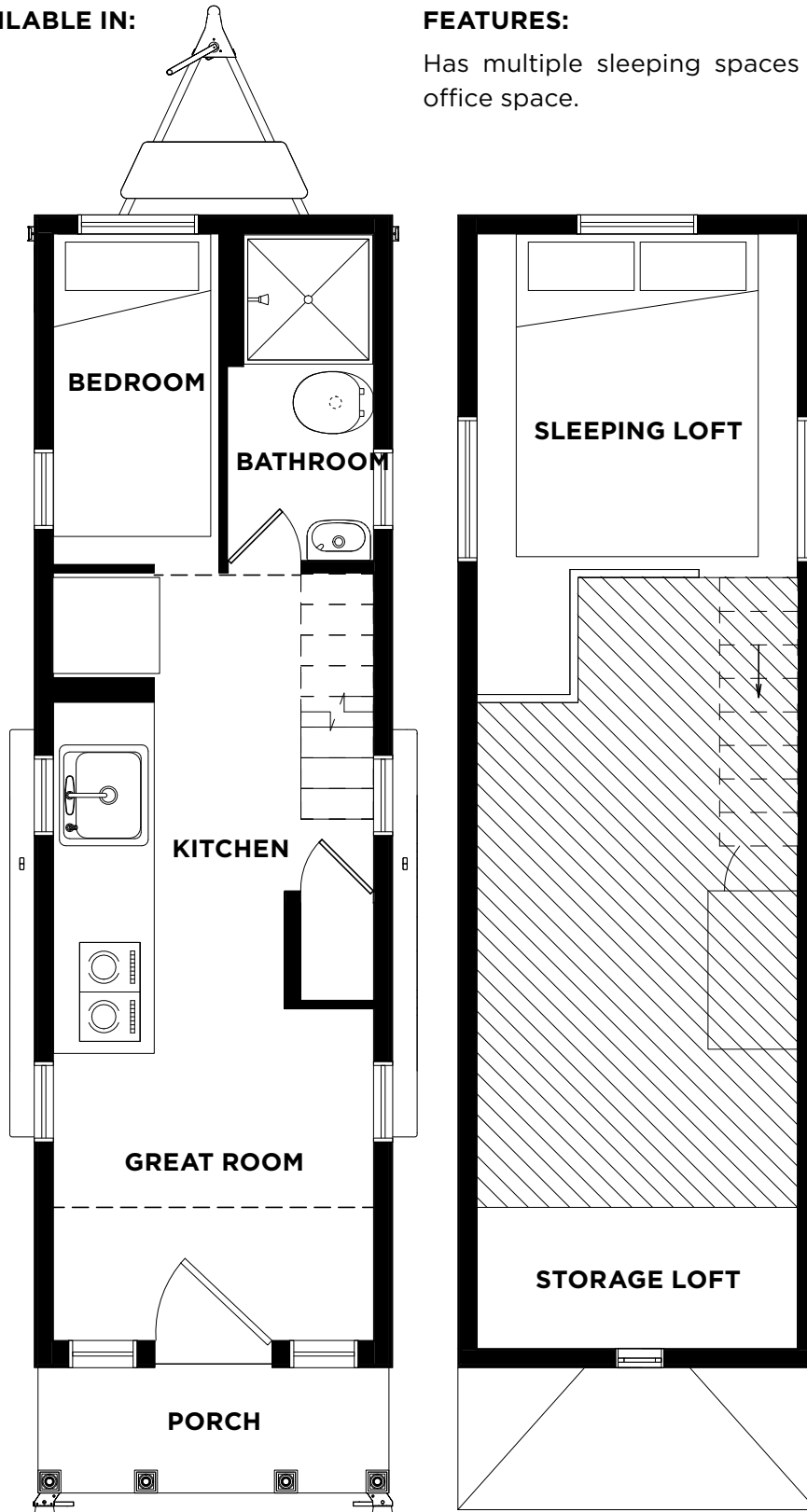
EQUATOR FLOOR PLAN

MODEL(S) AVAILABLE IN:

Cypress® 20, 26
Elm® 20, 26

FEATURES:

Has multiple sleeping spaces or a downstairs office space.



Shown: Elm® 26 Equator
All Floor Plans pgs 76-83

HORIZON FLOOR PLAN

MODEL(S) AVAILABLE IN:

Cypress® 26
Elm® 26

FEATURES:

A generous sleeping loft space along with a downstairs twin bedroom.



Shown: Elm® 26 Horizon
All Floor Plans pgs 76-83

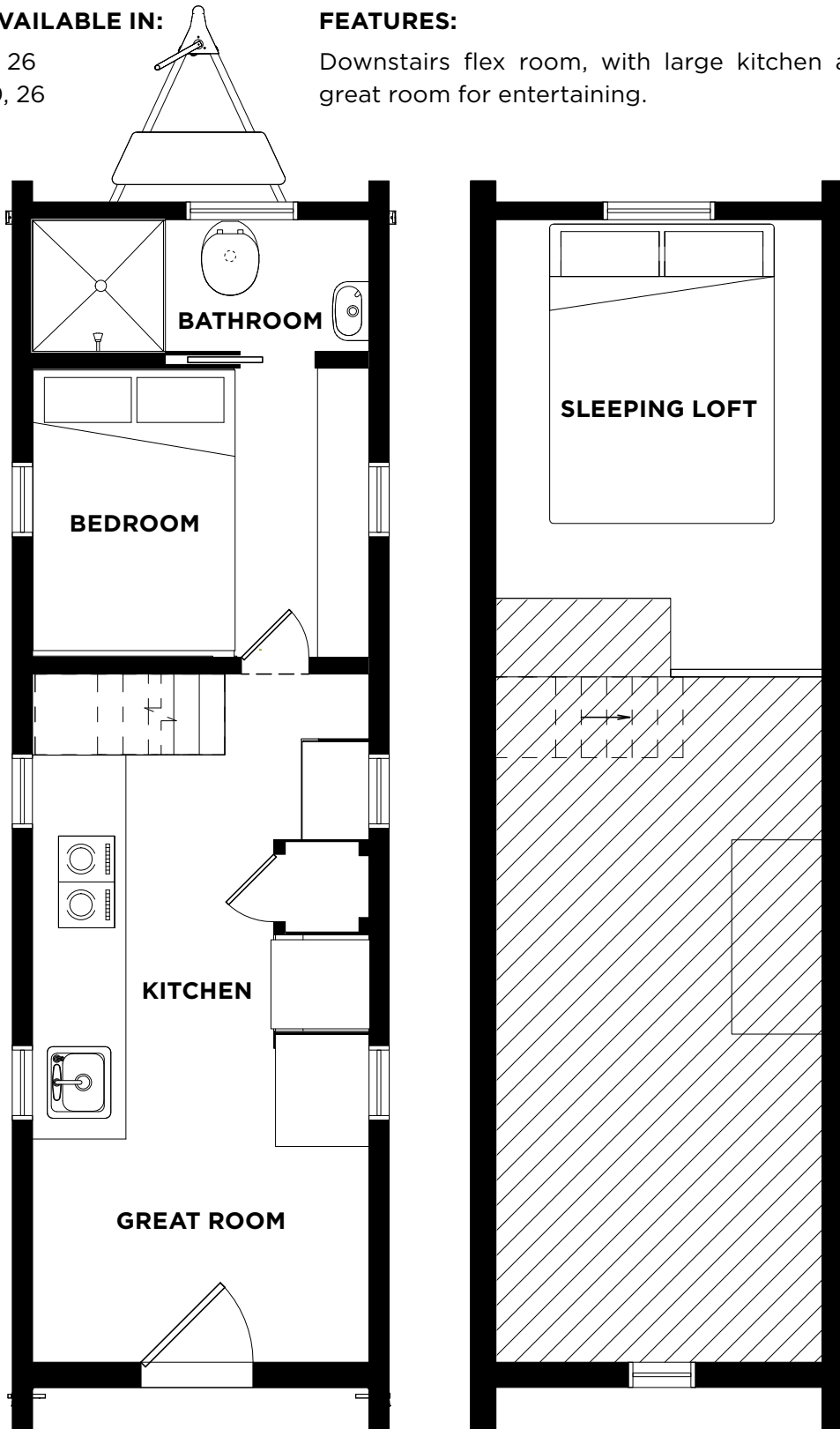
ALTA FLOOR PLAN

MODEL(S) AVAILABLE IN:

Farallon™ 20, 26
Roanoke™ 20, 26

FEATURES:

Downstairs flex room, with large kitchen and great room for entertaining.



Shown: Farallon™ 26 Alta
All Floor Plans pgs 76-83

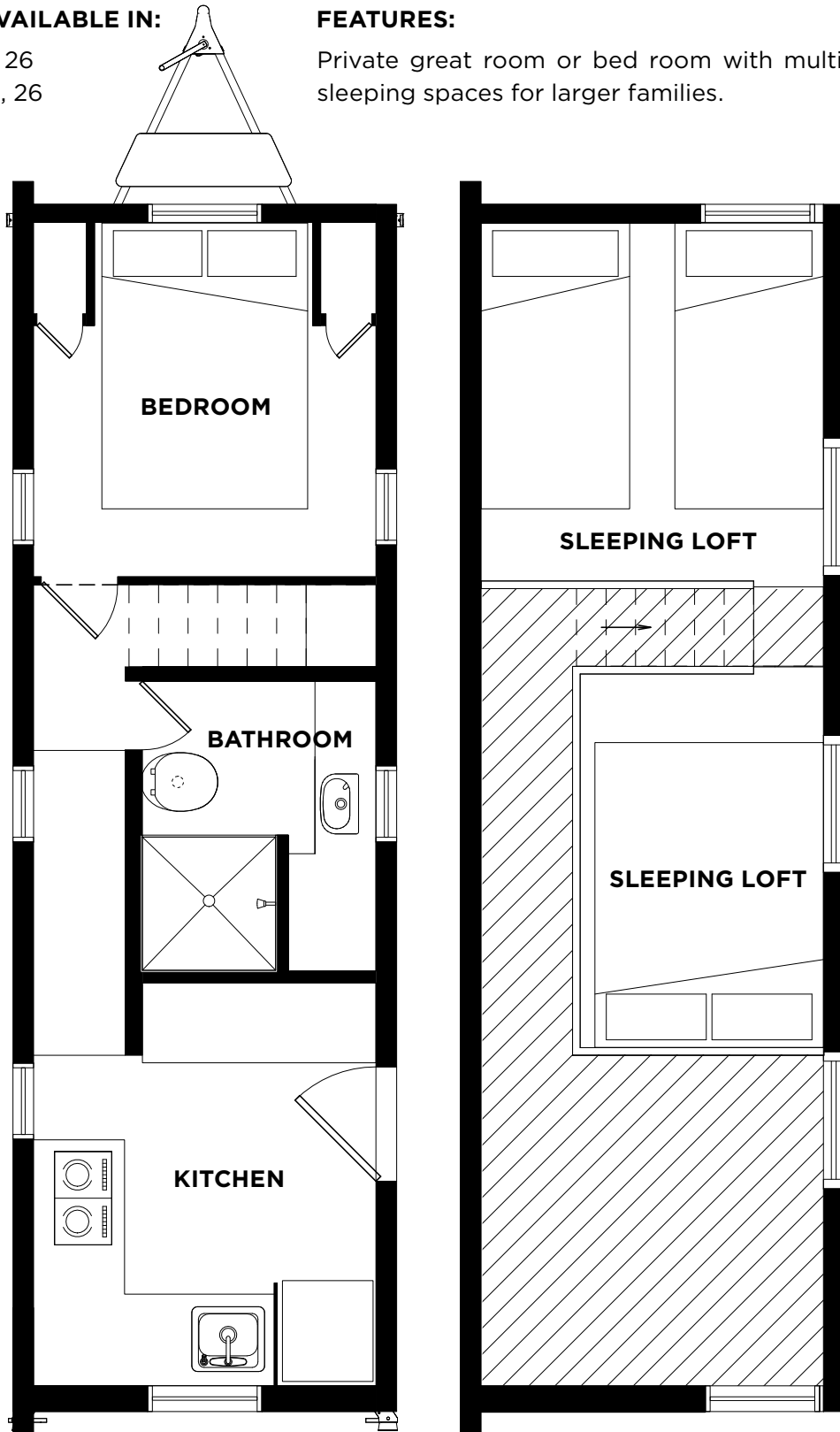
PACIFIC FLOOR PLAN

MODEL(S) AVAILABLE IN:

Farallon™ 20, 26
Roanoke™ 20, 26

FEATURES:

Private great room or bed room with multiple sleeping spaces for larger families.



Shown: Roanoke™ 26 Pacific
All Floor Plans pgs 76-83

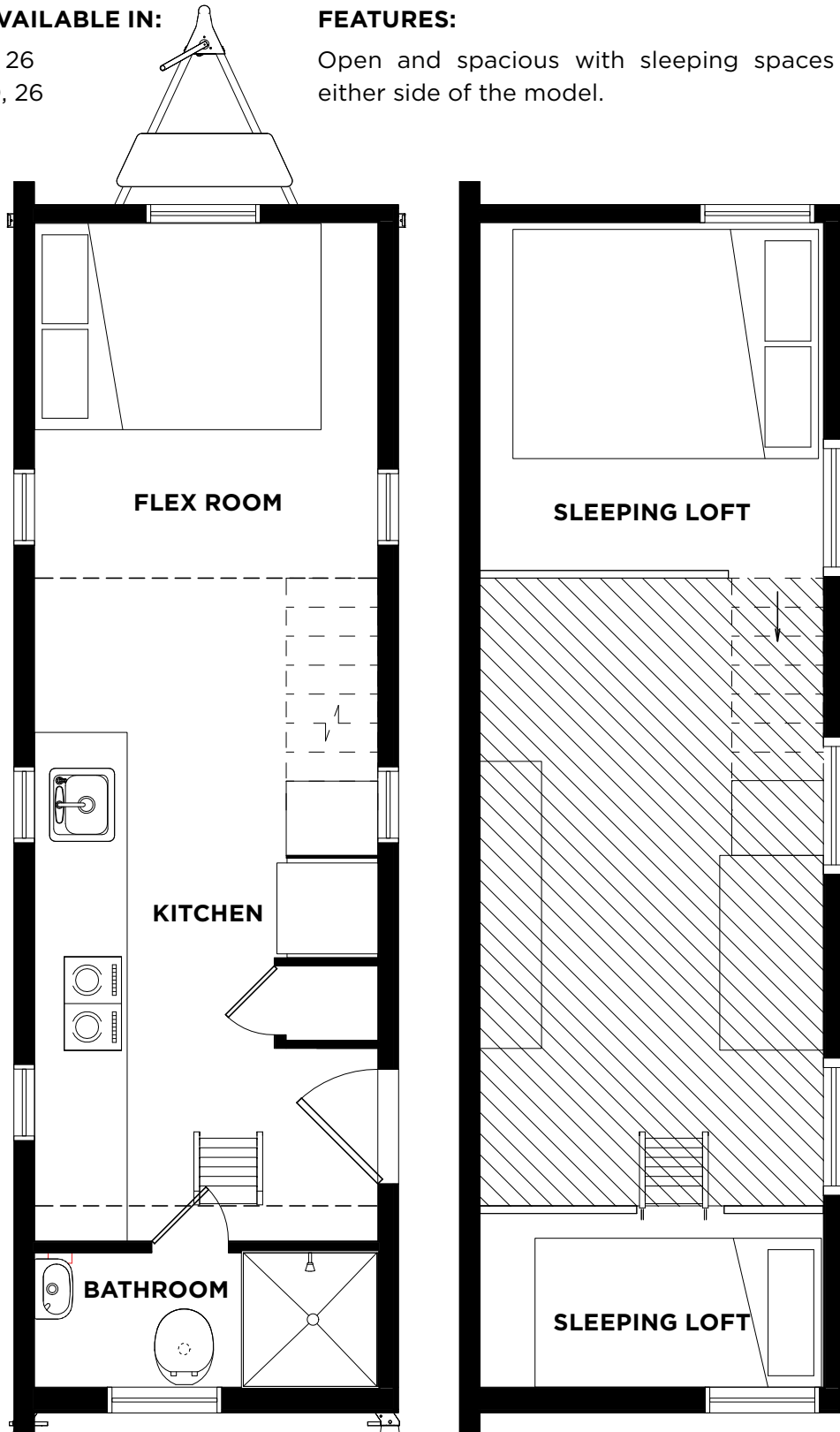
VISTA FLOOR PLAN

MODEL(S) AVAILABLE IN:

Farallon™ 20, 26
Roanoke™ 20, 26

FEATURES:

Open and spacious with sleeping spaces on either side of the model.



Shown: Roanoke™ 26 Vista
All Floor Plans pgs 76-83



EXTERIOR



STANDING SEAM METAL ROOF

EXTERIOR – ROOF

STANDING SEAM METAL ROOF (INCLUDED)

Dream big under your tiny herculean roof! This striking standing seam metal roof boasts a 30 year material warranty and is fireproof, lightweight and available in four eye-popping colors. Tiny House RV dormers expand the traditional gable roof and/or stargaze from the comforts of your RV by installing a skylight(s).



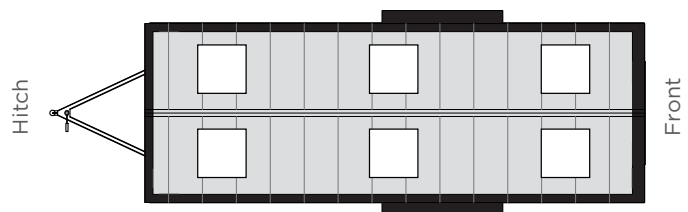
DOUBLE-SIDED SHED DORMERS (INCLUDED IN ELM™ AND CYPRESS™ MODELS)

Enjoy a spacious, breezy snooze with dormers and two additional windows to your loft! As a bonus, your extra windows will increase air circulation and provide you with a breathtaking morning view.



SKYLIGHT LOCATIONS

Middle locations for 26' models ONLY



- NON-OPERABLE SKYLIGHT (\$800 EACH)**
- OPERABLE SKYLIGHT (\$1,200 EACH)**

Sleep under the stars! 21 x 26 for non-operable and 30 x 30 for operable. Skylights will expand your ceiling into the sky.

Place an "X" in all the locations you would like to have a skylight installed. The middle section is for 26' models ONLY. Roanoke™ only has one row available.

■ Elm* ■ Cypress* ■ Farallon™ ■ Roanoke™

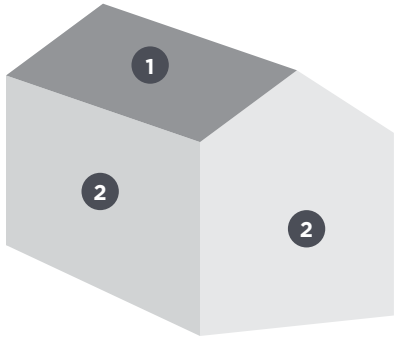


NATURAL CEDAR CLAPBOARD SIDING

EXTERIOR – SIDING AND TRIM

EXTERIOR SIDING

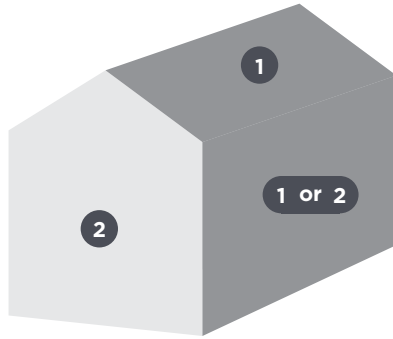
Our choice siding is clapboard cedar because of its gorgeous finish and exceptional stamina, the perfect combination for a “tiny home” designed to travel. Cedar is light weight, resistant to bugs and fares well in all climates. For extra protection and to increase longevity, we finish our siding with a clear sealer. For those who prefer a painted finish, we use a “LP Lap Siding”, an incredibly resilient engineered wood.



ELM® AND CYPRESS®

The chosen standing seam roof goes on top of your model. The wood siding wraps around all four of the sides.

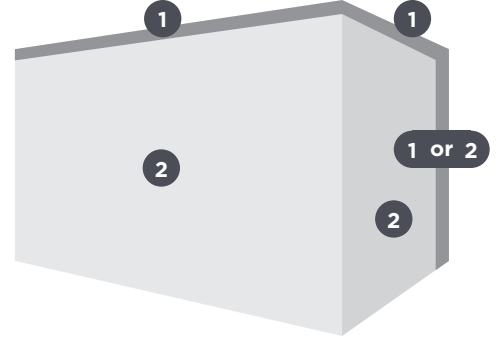
- 1 CHOSEN ROOF OPTIONS**
- 2 WOOD SIDING OPTIONS**



FARALLON™

Your standing seam roof can wrap around the top and long sides of the Farallon™ or have all wood as your siding option.

- 1 CHOSEN ROOF OPTIONS**
- 2 WOOD SIDING OPTIONS**



ROANOKE™

The back and the top of the Roanoke™ can have standing seam roofing or all sides may have a traditional wood siding.

- 1 CHOSEN ROOF OPTIONS**
- 2 WOOD SIDING OPTIONS**



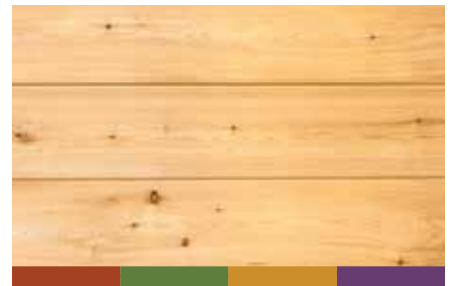
CLAPBOARD SIDING

- NATURAL [CEDAR WOOD]
- PAINTED [ENGINEERED]



BOARD AND BATTEN SIDING

- NATURAL [CEDAR WOOD]
- PAINTED [ENGINEERED]



TONGUE AND GROOVE SIDING

- NATURAL [CEDAR WOOD]



SIDING: _____

TRIM: _____

Additional colors are \$300 each.

Don't see the color you want? Find your favorite Sherwin-Williams exterior paint, and let us know.

■ Elm® ■ Cypress® ■ Farallon™ ■ Roanoke™



TURNED PORCH POST

EXTERIOR — PORCH

TINY HOUSE RV PORCH

Our covered porches are not only charming, but they also offer a comfortable weather barrier for your entryway. Enjoy a coffee while delicate snowflakes dance before your eyes or dig for your keys without getting soaked. The 1x6 porch boards, turned post, 2x4 railings and 2x2 spindles are made from cedar to match the rest of the RV.



FULL PORCH (STANDARD)

A picturesque full porch serves as a classic frame to a romantic entry. Sealed cedar wood posts, superlative carpentry, sharp proportionality and an elegant railing create a presence of grandeur.



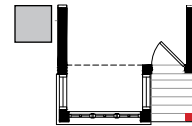
CORNER PORCH (STANDARD)

The Cypress® offers a variety of porch options to fit each owner's personal preference. Choose from: right or left corner porch, decorative railing positions or porch post only.

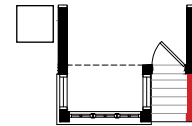


TURNED POST(S)

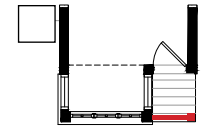
SQUARE POST(S)



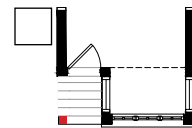
Right Corner Porch Post Only



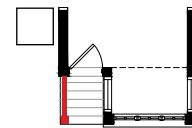
Right Corner Porch Railing Right



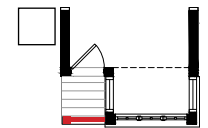
Right Corner Porch Railing Front



Left Corner Porch Post Only



Left Corner Porch Railing Left



Left Corner Porch Railing Front



NO PORCH (NO COST)

Choose to have no porch at all, changing the aesthetics of your Tumbleweed but adding interior space.

■ Elm® ■ Cypress® ■ Farallon™ ■ Roanoke™



FARALLON WITH MODERN LIGHTS

EXTERIOR — PORCH (CONTINUED)

LIGHTS AND STEPS

Light the entry to your Tumbleweed and add a helping hand with exterior lights and custom step options. Go traditional or modern with two styles of lights and make getting up to your Tumbleweed front porch or exterior door that much easier with our step options.



LIGHT (INCLUDED)

A motion activated porch light illuminates your entry and greets evening guests.



MODERN LIGHTS (\$750)

Modern lighting on either side of the door streaming light from above and below.



FRONT STEPS (\$200)

Matching, sturdy 24" steps complete this captivating veranda and provide an easy entry.



HALF WIDTH STEPS WITH RAILING (\$750)

Custom cedar steps with included double-sided steel railing create a beautiful entry to your Tiny House RV.

FULL WIDTH STEPS WITH RAILING (\$1,500)

Span the full width of your porch with two sets of these unique steps.



DUAL PANE WINDOWS

EXTERIOR – WINDOWS

WINDOWS

All dimensions are approximate

Windows will flood your Tiny House RV with warm sunshine and protect you against an icy winter storm. At Tumbleweed we use Jeld-Wen's dazzling premium wood windows with aluminum clad exterior. All of our windows are dual-pane, dual-glazed, low-e and with tempered glass for efficiency and safety.



CRANKS (INCLUDED)

The tan cranks lay flat out of the way and open to the outside world.



AWNING WINDOWS (INCLUDED)

All of our windows are awning (or windows that hinge from the top), allowing you to enjoy an open window, even when it rains!



WINDOWS WITH GRIDS (NO COST)



WINDOWS WITHOUT GRIDS (NO COST)



MESA RED



BLACK



HARTFORD GREEN



CHESTNUT BRONZE



WHITE

WINDOW SIZES

ELM®

CYPRESS®

FARALLON™

ROANOKE™

Front Windows	17" x 36" (2)	15" x 36" (3)	18" x 18" (1)	20" x 36" (2)
Side Windows	20" x 36" (6-8)	20" x 36" (6-8)	20" x 36" (6-8)	30" x 36" (2)
Back Windows	30" x 36"	30" x 24" (1) / 30" x 36" (1)	30" x 36" (1) / 30" x 24" (1)	20" x 36" (2-3)
Dormer Windows	36" x 17" (2)	36" x 17" (2)	36" x 17" (2)	36" x 17" (3)

Screens are included

■ Elm® ■ Cypress® ■ Farallon™ ■ Roanoke™



COMPLETE DOOR WITH HARDWARE

EXTERIOR – DOOR(S)

EXTERIOR DOOR

Your Tiny House RV's entry is also its first impression. Our beautifully proportional doors are specially designed for every Tumbleweed Tiny House RV and equipped with top of the line hardware and a matching window. An optional second entry, located on the side of the model, is now available.



TRADITIONAL (NO COST)
Secure, resilient and harmonizes with the overall beauty and value of your RV.



FULL PANE (NO COST)
A full pane glass door lets the light from the outside, in. Simple shapes add a touch of modern.



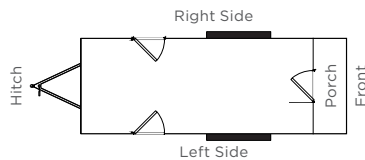
SIDE WINDOW (\$750)
Large door with side window giving you a combination of traditional and modern.



SIDE DOOR [REPLACE WINDOW LOCATION] (\$1,550 \$12/mo*)

RIGHT HITCH

LEFT HITCH



SCREEN DOOR

FOR FRONT DOOR (+\$400)

FOR SIDE DOOR (+\$400)

■ Elm* ■ Cypress* ■ Farallon™ ■ Roanoke™

INTERIOR



INTERIOR

INTERIOR

When you step inside a Tumbleweed, we want you to immediately feel at ease. Like a carefully assembled piece of art, we work hard to make sure each of our craftsman-style Tiny House RV are warm and inviting, functional and spacious, while intentionally drawing the occupant's eye to unexpected and delightful details.



PINE BOARDS AND TRIM (STANDARD)

We use knotty pine T&G 5/16" boards to adorn the interior of our Tiny House RVs. This panelling is not only gorgeous and lightweight, but it will also elongate your space with faint parallel lines that seem to fade into the distance.



NATURAL WOOD FINISH AND TRIM (\$2,000)

These plywood boards add a clean look to your interior and we match the trim and other wood features instead of the more traditional pine. A great option for a more modern aesthetic to your Tiny House RV.



HINGE DOOR (INCLUDED)

This darling interior closet door boasts fine detail work and matches the interior panelling.



SLIDING DOOR (\$600)

This door, which slides flush against your interior wall, is the ultimate space saver.



POCKET DOOR (\$300)

An additional option is the sliding pocket door, which will seamlessly hide within an interior wall.

■ Elm* ■ Cypress* ■ Farallon™ ■ Roanoke™



SEALED PLYWOOD INTERIOR

INTERIOR

INTERIOR FINISHING

Each and every Tumbleweed is unique, reflecting the owner's personal taste. We believe customizing your model will deepen your connection with the space. You have the option to keep your interior finish natural, seal it for extra protection, or choose a color stain that accentuates your style. So go be you!



UNTREATED INTERIOR (STANDARD)

Keep the wood interior natural and bare, without adding sealant or stain.



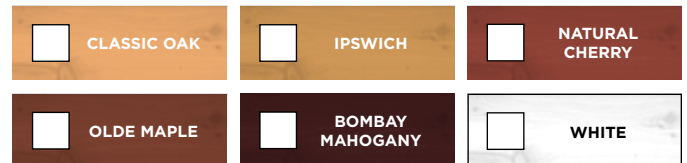
SEALED INTERIOR (\$2,700)

Seal your interior with a polyurethane varnish for easier surface cleaning and to protect from damage.



STAINED INTERIOR (\$4,500)

We stain our Tiny House RV because traveling can cause paint to crack and peel. Choose from natural stains to keep with the woodland feel or choose white, maple, cherry or mahogany for a pop of color.





FLOORING

Your flooring can act as a grounding device for your Tiny House RV’s interior design. Pun intended, but it’s also true! Choose from four flooring options, all of which are: attractive, durable, comfortable underfoot and environmentally-friendly.



VINYL DORAL WALNUT (STANDARD)

Dark, rich and robust. These COREtec™ vinyl walnut floors give a beautiful landing place for your footsteps as you walk through your Tiny House RV.



VINYL AUGUSTINE OAK (NO COST)

Waterproof vinyl floors with a warm gray aesthetic add a complex blend of traditional and modern. The floors are also strong and can take everyday wear and tear.



NATURAL BAMBOO (NO COST)

Add a hint of the tropics! This light colored bamboo will expand your space and is an extremely durable renewable resource.



SPICE BAMBOO (NO COST)

A smoky, eye-catching alternative to Natural bamboo. Both bamboo options are assembled as interlocking boards.



BEAUTIFUL LIGHT FIXTURES

INTERIOR – LIGHTING

LIGHTING

Dazzle and illuminate your space with high-quality fixtures. At Tumbleweed, we believe that details matter, especially in a tiny space that will only require a few light sources. We've hand-picked premium sleek fixtures that will bathe your Tiny House RV in a comfortable soft glow.



SCONCES (INCLUDED)

These unique Portfolio 6½"x1' light satin nickel pocket hardwired wall sconces give a warm glow to your model and light up each room.

Disc lights are found throughout the Farallon™ and the Roanoke™ models. The simple circular shapes goes beautifully with the modern feel of both Tiny House RVs.



CHANDELIER (STANDARD)

The contemporary Elysburg 3-Light satin nickel chandelier will cast a blanket of light over your great room and flawlessly match the sconces.



CEILING FAN (\$150)

Increase air circulation with the Monte Carlo Colony II 28" ceiling fan and light, which replaces the chandelier and fits perfectly within your charming roof line.



TRACK LIGHTING (\$200)

The flexibility of track lighting makes it ideal for your space. Illuminate high traffic areas with four sliding lights. Available in black or white.



LED LIGHTING PACKAGE (\$250)

Replace all light fixture bulbs with LEDs which have an estimated 20,000 hour lifetime.

■ Elm* ■ Cypress* ■ Farallon™ ■ Roanoke™



SPACIOUS KITCHEN PANTRY

STORAGE

Where will you put all your stuff? Storage is an essential component in any model, and our Tiny House RVs include a significant amount for space intended for your belongings. We also offer additional pieces to help you get organized, custom-made by the talented build crew.



STORAGE LOFT (INCLUDED)

This multi-functional space can function as an additional bedroom, cozy reading nook or storage for your cumbersome possessions.

RAILING (NO CHARGE)

A lightweight railing for both lofts if available.



STORAGE CLOSET (INCLUDED)

A lovely wood wardrobe, including a high shelf and built-in rod for hanging clothes.

Get in contact with your Tiny House Specialist to see what closet options work for you.

3' TALL AND 10" DEEP BOOK CASE (\$350)

6' TALL AND 10" DEEP BOOK CASE (\$450)

Display your treasures! These bookcases can fit next to your front door or along the side of your great room. Width is based on chosen location.

■ Elm* ■ Cypress* ■ Farallon™ ■ Roanoke™



READ THE INSTRUCTIONS CAREFULLY BEFORE USING THIS PRODUCT. FAILURE TO FOLLOW THE INSTRUCTIONS MAY RESULT IN DEATH OR SERIOUS INJURY.

WARNING
DO NOT EXCEED CAPACITY. FAILURE TO CHECK FOR PROPER FIT MAY RESULT IN DEATH OR SERIOUS INJURY.

WARNING
DO NOT OPERATE THIS PRODUCT UNLESS THE PRODUCT IS PLACED ON A SURFACE AS SHOWN IN THE INSTRUCTIONS. FAILURE TO DO SO MAY RESULT IN DEATH OR SERIOUS INJURY.

CONVENIENT OUTLETS AND SWITCHES

INTERIOR — EXTRAS

EXTRAS

Form and Function. In a large home you tend to forgive imperfections, but in a Tiny House RVs, the details really matter. Design your Tiny House RV to function as a companion to your lifestyle and consider a few small comforts that might improve your daily routine.



LIGHT SWITCHES AND OUTLETS (INCLUDED)

Almond colored outlets and switches are sprinkled throughout your model, so you'll never be caught searching for a power source.



DATA/TV OUTLET (\$50 EACH)

We'll install your Data/TV cable in which ever room you choose.

- | | |
|----------------------------------|-------------------------------------|
| <input type="checkbox"/> KITCHEN | <input type="checkbox"/> GREAT ROOM |
| <input type="checkbox"/> LOFT | <input type="checkbox"/> FLEX ROOM |



OUTLET/USB CHARGER COMBO (\$50 EACH)

We'll replace your standard outlets with ones that include two USB charging ports.

- | | |
|----------------------------------|-------------------------------------|
| <input type="checkbox"/> KITCHEN | <input type="checkbox"/> GREAT ROOM |
| <input type="checkbox"/> LOFT | <input type="checkbox"/> FLEX ROOM |

■ Elm* ■ Cypress* ■ Farallon™ ■ Roanoke™



FIREPLACE / MANTEL WITH SHELVING

EVEN MORE EXTRAS

We are always looking to increase to functionality and comfortability of our Tumbleweed Tiny House RVs and these additions are a great way to do so. Entertain, study, surf the web or just relax with these options for your great room space.



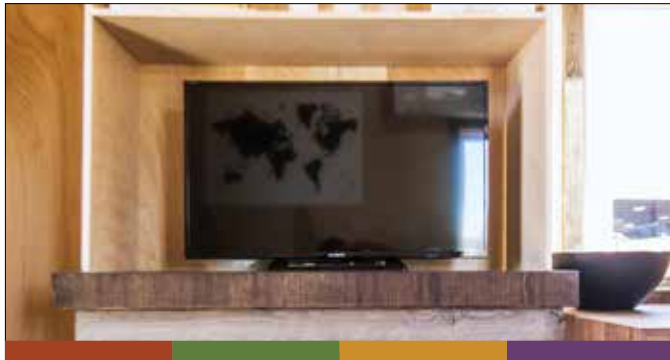
ENTRY WAY (NO COST)

Hang your troubles at the door along with your winter coat with these decorative hooks.



FIREPLACE / MANTEL (\$600)

Make your great room even greater with a place for an electric fireplace and mantel.



SHELVING FOR FIREPLACE / MANTEL (+\$200)

Add in shelving for your entertainment space and have a place to hold your television (not included).



DESK WITH BOOKSHELF

INTERIOR — EXTRAS CONTINUED

WORK STATIONS, SITTING AND STORAGE

Find a place to write the next Great American Novel or research cat videos with multiple places to add a desk to your Tiny House RV.



DESK / WINDOW SEAT (\$300)

The platform can adjust to be a desk or small daybed in the “bump out” portion of the Cypress®.



COUCH BENCH (\$300)

A comfy sitting area with plenty of storage and a place to hide a custom coffee table.



DESK (\$350)

This desk is the perfect place to get work done and conveniently folds down when not in use.



BOOK SHELF BY DESK (\$350)

Increase your storage space with office supplies or reference books next to your desk.

KITCHEN



KITCHEN — COUNTERS

COUNTERS

Serve up some style with an eye-catching countertop. Whether you prefer a traditional kitchen with lots of exposed wood or a modern kitchen with metal accents, we have options for you.



BUTCHER BLOCK COUNTERTOPS (STANDARD)

Traditional and inviting. These timeless 25" deep butcher block counters are easy to maintain and will give your kitchen a country charm.



WALNUT COUNTERTOPS (\$300)

These beautiful 25" deep Walnut counters add a rich color to your kitchen prep area. For those looking for something similar to our traditional butcher block, but a little different.



STAINLESS STEEL COUNTERTOPS (\$500)

Chic and sophisticated. These breathtaking 25" deep modern stainless steel countertops will dazzle your guests and give your kitchen a clean look.

■ Elm* ■ Cypress* ■ Farallon™ ■ Roanoke™



TRUE INDUCTION ELECTRIC COOKTOP

COOKING

Just because you're minimizing doesn't mean you can't have your dream kitchen! Whether you're a professional chef or a frozen dinner connoisseur, we have options for you.

ELECTRIC OPTIONS (STANDARD pg 70)



INDUCTION BURNER COOKTOP (STANDARD)

Sleek and flush. This True Induction 2-burner electric cooktop heats up fast, is energy efficient and easy to clean.



ELECTRIC RANGE AND OVEN (\$800)

Need a little more? This 20" electric stainless steel oven comes with four burners.



ADD OPTIONAL RANGE HOOD (\$250)

Additional venting for moving cooking smells and moisture quickly out of your kitchen.

PROPANE OPTIONS (UPGRADE pg 70)



PROPANE COOKTOP + HOOD (\$250)

Fire up your stove without being "plugged in" by using this 2-burner propane cooktop, which features dual 6,500 BTU burners.



PROPANE RANGE AND OVEN + HOOD (\$1,050)

Need a little more? This 20" propane stainless steel oven includes four burners and a ventilation hood.



ATWOOD RANGE AND OVEN + HOOD (\$1,050)

Three burner range and oven with vent hood is great for our Farallon™ and Roanoke™ models.



UNDERCOUNTER EDGESTAR REFRIGERATOR

KITCHEN — REFRIGERATOR

REFRIGERATOR

Chill out with our energy efficient stainless steel refrigerator/freezer combination units. Choose to either tuck it away under the counter or upgrade to a larger size for storing those yummy leftovers.



UNDERCOUNTER

Electric stainless steel EdgeStar 3.1 Cu. Ft. Energy Star fridge/freezer.

20' MODELS (INCLUDED)

7.4 REFRIGERATOR

The electric Avanti 7.4 Cu. Ft. compact refrigerator boasts even more room for goodies.

26' MODELS (INCLUDED)

9.2 REFRIGERATOR (\$125)

9.2 cu-ft Bottom Freezer and Refrigerator is our largest space to keep things cool and frozen.

■ Elm* ■ Cypress* ■ Farallon™ ■ Roanoke™



BEAUTIFUL FARM SINK

KITCHEN — PREPARATION

WASHING AND PREPARATION

Wash and prep your veggies in one of our two kitchen sink options and expand your usable kitchen counter space with a drop leaf table which folds down when not in use.



KITCHEN SINK (NO COST)

Built into your countertops, the 8" deep stainless steel sink makes prepping food and doing dishes simple.



FARM SINK (\$600)

Elegant and beautiful, this kitchen center piece fits right in with a modern kitchen design.



DROP LEAF TABLE (\$500)

A 24" x 24" or 24" x 36" collapsible table depending on kitchen layout, for entertaining or food preparation.



MODERN CABINETS IN FARALLON™

KITCHEN – CABINETS

CABINETS

Keep all your culinary supplies and tools organized and ready for action with our cabinetry options. Customize the look with a variety of color choices as well.



TRADITIONAL CABINETS (NO COST)
Full size kitchen cabinets with accessories are located under the countertops.



MODERN CABINETS (\$2,000)
Modern style cabinets with clean lines and multiple front choices.



TOE KICK DRAWERS (\$250 EACH)
Cleverly concealed drawers fit under your cabinets.

QUANTITY: 1 2

TRADITIONAL CABINET COLOR CHOICES (SELECT ONE)

<input type="checkbox"/> MESA RED	<input type="checkbox"/> BLACK	<input type="checkbox"/> HARTFORD GREEN	<input type="checkbox"/> DARK BLUE	<input type="checkbox"/> CHOCOLATE	
<input type="checkbox"/> CLASSIC GRAY	<input type="checkbox"/> WHITE	<input type="checkbox"/> SAGE GREEN	<input type="checkbox"/> LIGHT BLUE	<input type="checkbox"/> FRENCH VANILLA	
<input type="checkbox"/> CLASSIC OAK	<input type="checkbox"/> IPSWICH	<input type="checkbox"/> NATURAL CHERRY	<input type="checkbox"/> OLDE MAPLE	<input type="checkbox"/> BOMBAY MAHOGANY	<input type="checkbox"/> WHITE

MODERN CABINET COLOR CHOICES (SELECT ONE)

<input type="checkbox"/> HIGH GLOSS WHITE	<input type="checkbox"/> HIGH GLOSS GRAY-TURQUOISE	<input type="checkbox"/> WOOD EFFECT BLACK	<input type="checkbox"/> FLAT WHITE
---	--	--	-------------------------------------

■ Elm* ■ Cypress* ■ Farallon™ ■ Roanoke™



OPEN PANTRY IN OVERLOOK FLOOR PLAN

KITCHEN – STORAGE

STORAGE

Storage is the secret ingredient! Save your counter space by tucking away your dry goods and hiding your appliances in these clever storage solutions that will keep your kitchen organized and tidy.



UPPER SHELVING (STANDARD)

High open shelving doubles as a display for your favorite dishes and kitchen tools.



MODERN SHELVING (\$100)

A combination of wood and steel, these work well with the modern package. *Replaces upper shelving



UPPER CABINETS (\$350)

Double your storage and secure items with these handsome cabinets. *Replaces upper shelving



OPEN PANTRY (\$1,000)

Available only in the Overlook floor plan, this beautiful double-sided wood pantry adds 11 shelves!

BATHROOM



FIBERGLASS SHOWER

BATHROOM – WASHING

BATHROOM

Tumbleweed's tiny bathroom has been carefully designed for comfort, fluidity and functionality. Supplying you with all the necessities and premium Moen hardware.



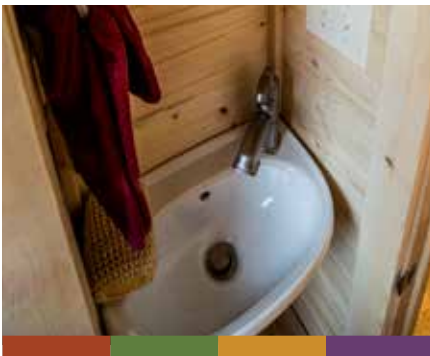
FULL SHOWER (INCLUDED)

The one-piece fiberglass shower comes included in all our models.



MOEN HARDWARE (INCLUDED)

Sophisticated brushed nickel Moen Adler shower head with a standard 2.5 gpm of water flow for approximately 5-10 min. shower.



HAND SINK (NO COST)

Small hand sink perfectly fits into the traditional look and feel of your Tumbleweed.



SINK AND VANITY (\$400)

Clean and sophisticated sink and vanity base cabinet work great together for a modern look.



FAN (INCLUDED)

This quiet bathroom fan is helpful for controlling moisture in your Tumbleweed.



TRADITIONAL HARDWARE (NO COST)

Brush nickel towel hook, toilet paper roll and robe hook go with your traditional style.



MODERN HARDWARE (NO COST)

Stainless steel towel rack and toilet paper holder fit in with your modern sense of style.

■ Elm* ■ Cypress* ■ Farallon™ ■ Roanoke™



NATURE'S HEAD COMPOSTING TOILET

BATHROOM – TOILET OPTIONS AND EXTRAS

BATHROOM (CONTINUED)

You're the king of a tiny castle, and it's time to choose your throne! No matter if you choose our low-profile RV china bowl toilet or our premium composting toilet, you'll have a comfortable commode that will suit your, ahem...needs.



RV TOILET (STANDARD)

Thetford Aqua Magic® Style II low flow RV toilet comes with a comfortable, full-size residential seat and foot activated two quart flush.



COMPOSTING TOILET (\$1,000)

The Nature's Head is the best self-contained composting toilet on the market. It's also made in the USA and is odorless, easy to use and requires no water.



SMALL MIRROR (NO COST)

A small mirror perfect for your space let's you primp in the mornings before you start your day.



MEDICINE CABINET (\$100)

Store your toiletries with this 15.75-in x 25.75-in recessed medicine cabinet.

SLEEPING

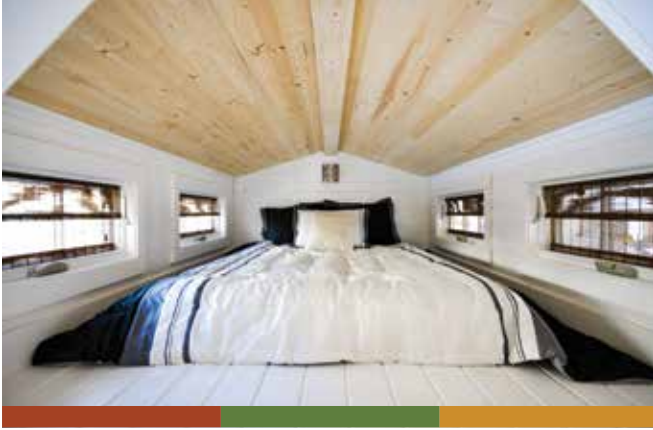


COZY UPSTAIRS SLEEPING LOFT

SLEEPING — UPSTAIRS LOFT

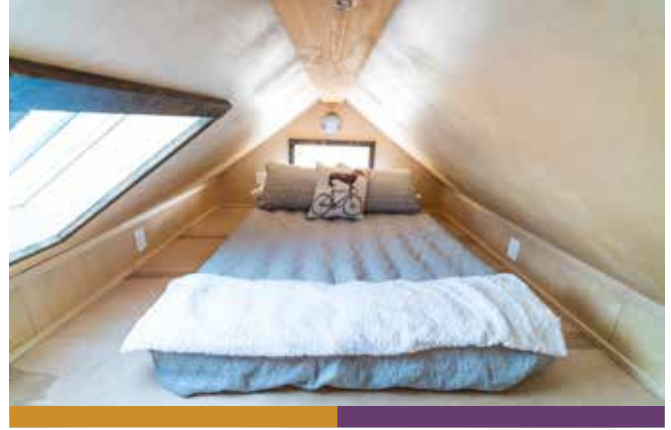
SLEEPING LOFT

Cozy up for the night in a comforting space that's perfect for any dreamer. Let the rain lull you to sleep and snuggle under the blankets in your hibernation haven. If you choose a king size mattress, be sure it can be folded like a Tempur-Pedic®.



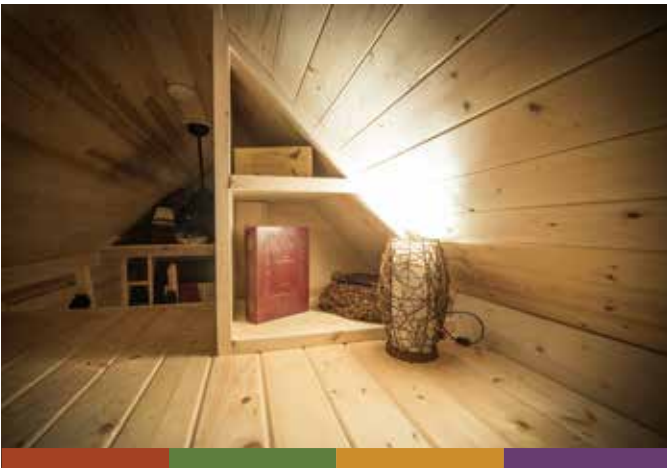
DORMERS (INCLUDED IN ELM™ AND CYPRESS™)

The king size sleeping space in the upstairs loft makes getting cozy at night even better.



SLEEPING LOFT (STANDARD)

The Roanoke™ and the Farallon™ both feature a large sleeping space for you and yours.



CUSTOM LOFT STORAGE (\$450)

This stylish storage cubby adds privacy and is flush with the roof line. Custom built for each loft space depending on options.



1 SIDE CABINET (\$350 RIGHT OR LEFT SIDE)

2 SIDE CABINETS (\$700 BOTH SIDES)

Beautiful built-in storage (8" wide) that nestles on the sides of a queen mattress.

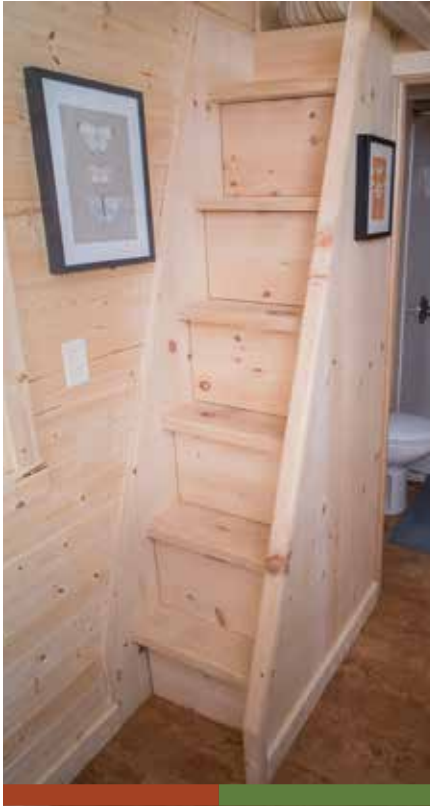


ACCESS THE LOFT WITH STORAGE STAIRS

SLEEPING — UPSTAIRS LOFT

LOFT ACCESS

Okay dreamers, it's time to decide how to float up to your siesta sanctuary. The classic rolling library ladder is compact and quaint, but our innovative staircase provides the easiest climb.



STAIRS (STANDARD)

Custom stairs make it easy to climb, even with sleepy eyes.



WITH STORAGE (\$2,500)

Add drawers to your staircase for the ultimate space saver!



MODERN STAIRS (\$2,000)

Unique staircase with different materials used and storage.



HOOK LADDER (NO COST)

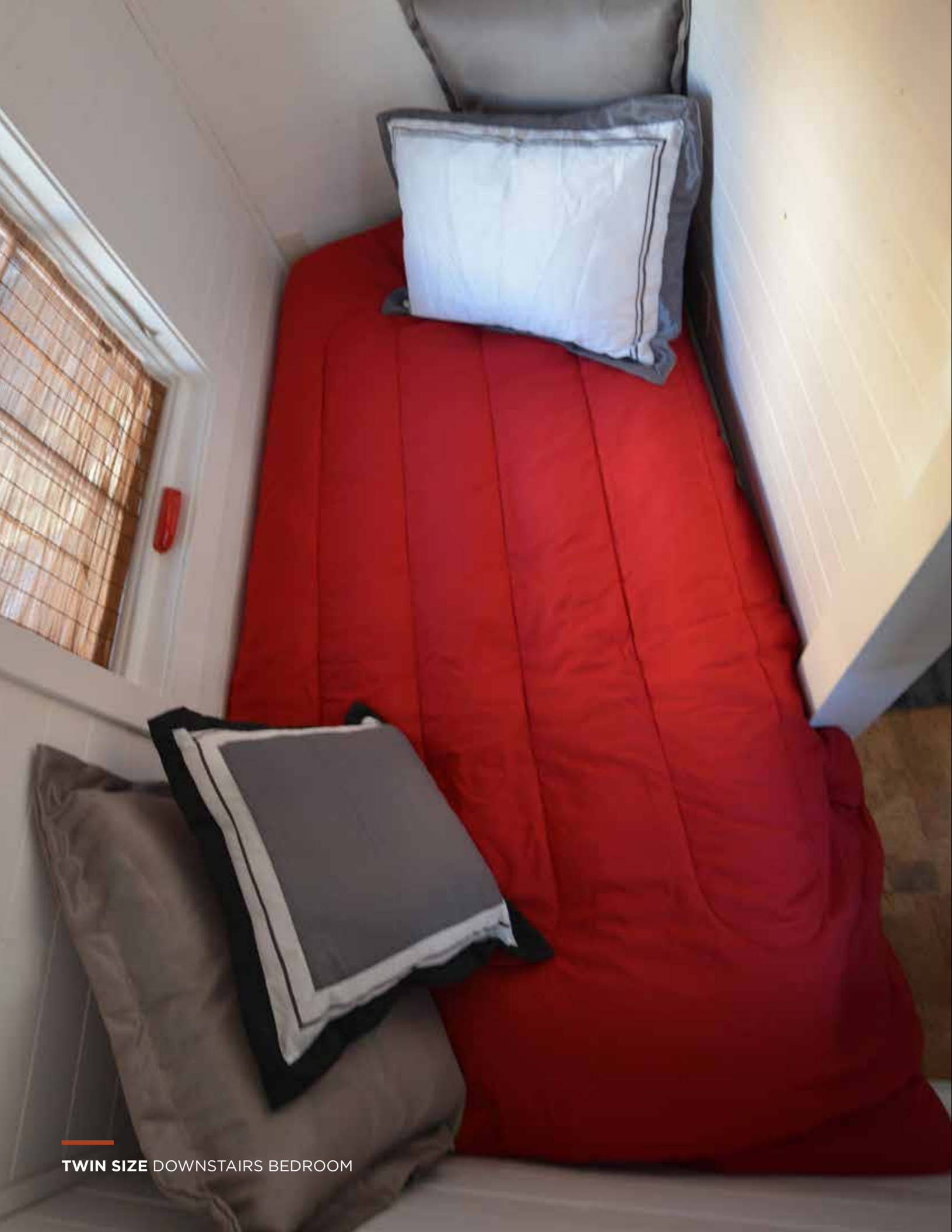
Replace the stairs with a hook ladder which securely locks into place to climb up to your lofts.



ROLLING LIBRARY LADDER (\$500)

The Quiet Glide rolling library ladder is elegant, functional and easy to tuck away. Replaces stairs.

■ Elm* ■ Cypress* ■ Farallon™ ■ Roanoke™

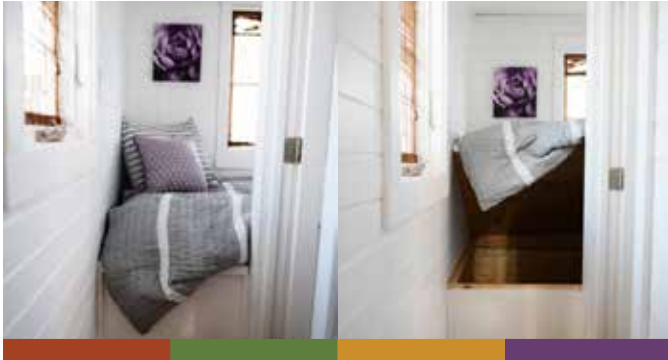


TWIN SIZE DOWNSTAIRS BEDROOM

SLEEPING – DOWNSTAIRS AND STORAGE

DOWNSTAIRS SLEEPING

Shut-eye without the climb! Choose to have a downstairs bedroom for yourself, your child or a guest. Alternatively, this space can be used as an office, studio or den.



BED PLATFORM (STANDARD)

Store your winter clothes, extra blankets or have access to a large water tank under this platform. Available in floor plans with downstairs bedrooms or flex room options.



OPEN FLEX ROOM (NO COST)

Replace the bed platform with an open space. Perfect for a private room like a extra bedroom, child's play room, an office or a large walk-in closet.



FLEX ROOM SHELVING (\$300)

The open shelving in your flex room gives you even more space to hold all your belongings.



BED PLATFORM WITH DRAWERS (\$800)

If you don't want to lift your mattress to get to the underneath storage, go with drawers.

UTILITIES



PROPANE AND ELECTRIC UTILITY OPTION

UTILITIES – PACKAGES

UTILITY PACKAGE OPTIONS

Tiny House RVs use far less energy than an average sized home. Determine your system and look forward to reducing your carbon footprint and your utility bills!

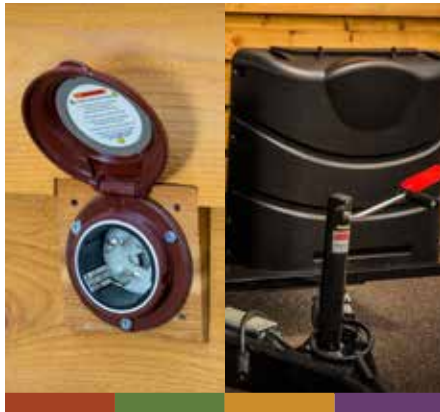


ALL ELECTRIC OPTION (STANDARD)

Electric appliances keep it simple without the need to carry propane. Standard RV 50A hookups / 220 volts.

*50 AMP Power Center
Marinco 50 AMP Power Inlet
BAL 25110 Airport Air Exchanger
Suburban 10 Gallon Electric Water Heater*

ADD 50 AMP POWER CORD (\$300)



ADD PROPANE SERVICE (\$1,800)

Designed to handle large electric appliances such as air conditioners and laundry machines. Propane is used for heating and cooking. Great for going off grid or extreme cold climates. Standard RV 50A hookups / 220 volts.

*50 AMP Power Center
Marinco 50 AMP Power Inlet
BAL 25110 Airport Air Exchanger*

ADD 50 AMP POWER CORD (\$300)

HEATING AND COOLING OPTIONS AND UPGRADES

Now that you have chosen which utility package works best for your needs, onto heating and cooling your Tiny House RV. Decide on which option best fits your Tiny House RV heating and cooling needs with helpful descriptions next to each item.

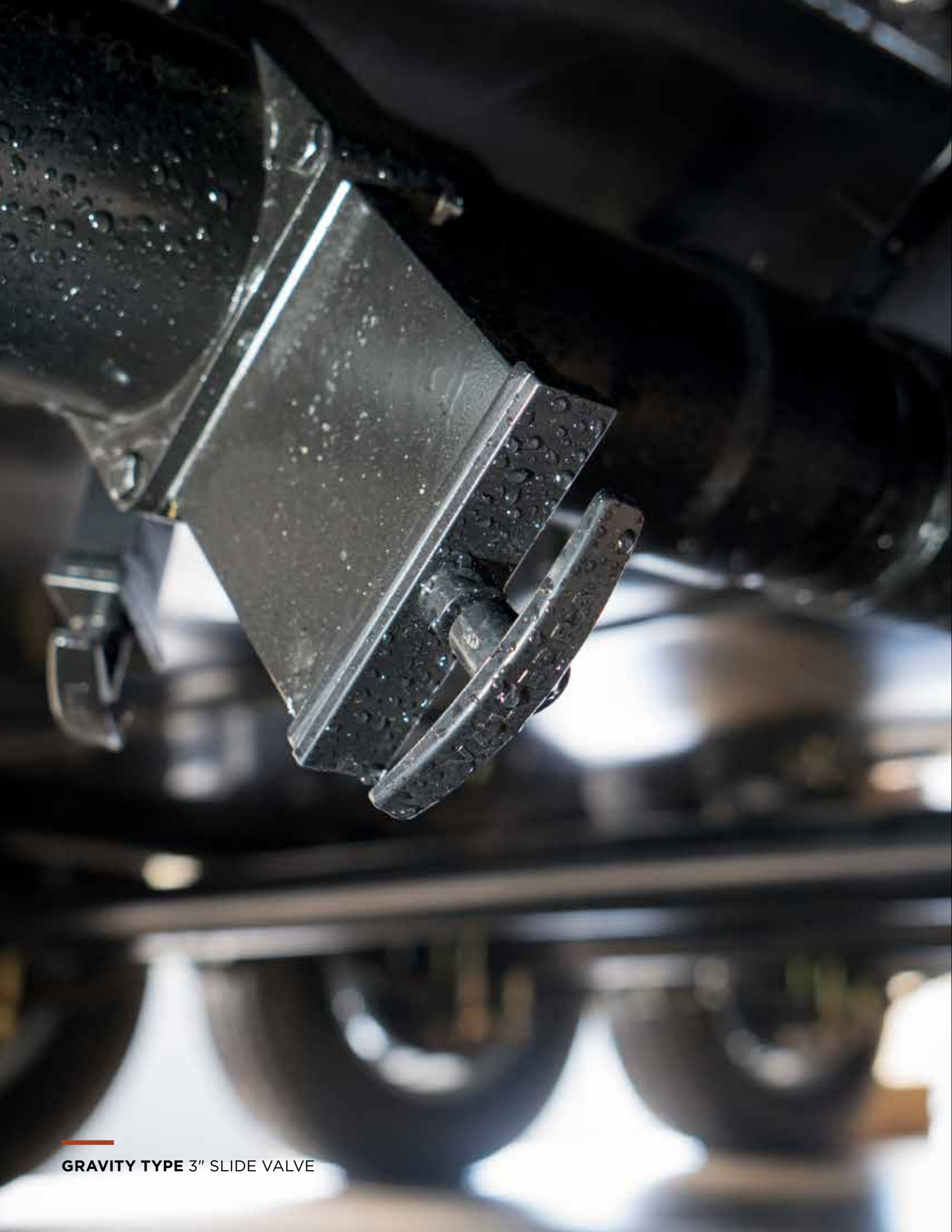
ENVI HEATER (STANDARD)
Great for on-grid moderate climates

MINI SPLIT AC + HEATER COMBO (\$1,200)
Great for hot climates

MINI SPLIT AC + HEATER COMBO AND + ENVI HEATER FOR SECONDARY HEAT (\$1,700)
Great for extreme cold climates

FORCED AIR HEATER (\$1,500)
Great for off grid

FORCED AIR HEAT WITH MINI SPLIT AC + ELECTRIC HEAT (\$2,700)
Great for any climate



GRAVITY TYPE 3" SLIDE VALVE

UTILITIES — PLUMBING/WASHING

PLUMBING

Hit the road with all your plumbing needs on board, including: a fresh water tank, premium water heater and the best piping available for portable dwellings.



- WASHER/DRYER COMBO** (\$1,500)
2.0 Cu Ft Splendide washer and dryer combo (WD2100XC) with vented drying system that allows for shorter cycle times. 15lb capacity. Available in white only.



- WASHER/DRYER COMBO** (\$2,300)
2.3 Cu Ft LG washer and dryer combo (WM3477HS) with ventless condensing dryer at a 19lb capacity and a built-in water heater. Protrudes 2" from cabinet. Available in silver or white.



- ELECTRIC WATER HEATER** (STANDARD)
 PROPANE WATER HEATER (NO COST)
Suburban 10 gallon hot water heater in either electric or propane.



- PROPANE ON DEMAND WATER HEATER** (\$1,300)
Requires propane upgrade to be selected. Tankless propane water heater with full gas modulation. Vented to exterior and cold weather protection.



- 26 GAL. WATER TANK AND PUMP** (\$500)
If you want to have a water reserve for your plumbing needs or can't tap into pressurized water.

OTHER INCLUDED PLUMBING SPECS

- PEX ½" flexible plumbing lines
- Street water hookup
- Gravity type 3" slide valve

■ Elm® ■ Cypress® ■ Farallon™ ■ Roanoke™



CLEARLY MARKED SAFETY EXITS

UTILITIES – SAFETY

SAFETY

At Tumbleweed, your safety is important to us. We've included these extra safeguards to warn and protect you. So sleep easy, we've got your back.



CO/LP DETECTOR (INCLUDED)

RV motorhome and trailer 12V CO Carbon Monoxide and propane detector alarm.



SMOKE DETECTOR (INCLUDED)

Centrally located to warn you of a fire or that you're burning the soufflé.



FIRE EXTINGUISHER (INCLUDED)

Centrally located and easy to reach, to fight fire or smother ruined soufflé.



CLEAR EMERGENCY EXITS (INCLUDED)

Red indicators mark the emergency exits located throughout your Tiny House RV including: front, back and loft windows.

EXTENDED WORKMANSHIP AND MATERIALS WARRANTIES

Add even more peace of mind with two extended warranty options. Great for those who are ready to go tiny and want to make sure they are secure for the long road ahead.

5 YEAR EXTENDED WARRANTY (\$1,495)

9 YEAR EXTENDED WARRANTY (\$1,895)

■ Elm* ■ Cypress* ■ Farallon™ ■ Roanoke™

FLOOR PLANS

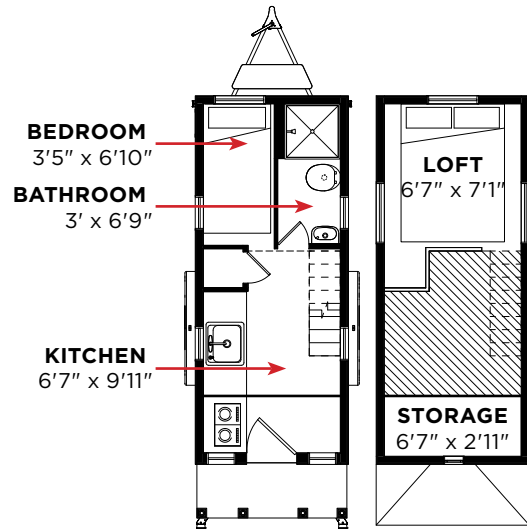


FARALLON 26 ALTA FLOOR PLAN

ELM® 20 FLOOR PLANS

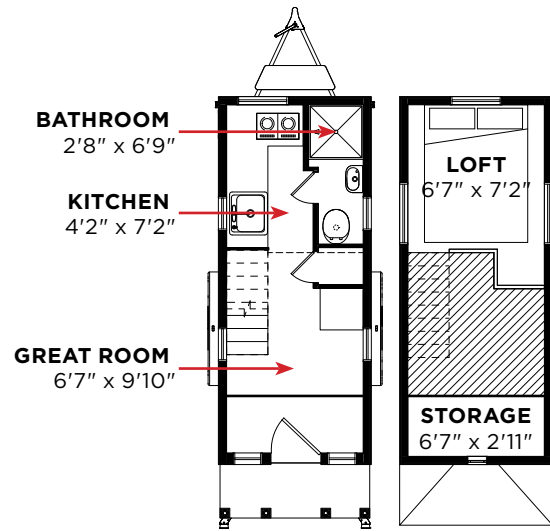


Adjustments are made through the design process affecting the overall layout. All dimensions are approximate.



EQUATOR

132 sq ft + 67 Loft. Total: 199 sq ft.



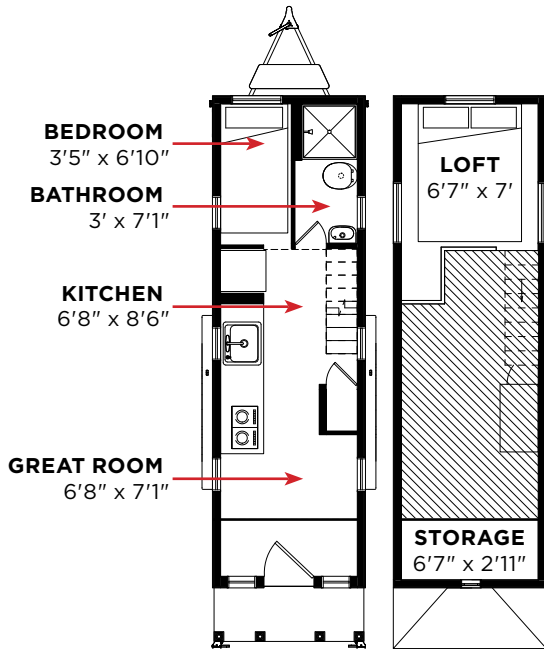
OVERLOOK

132 sq ft + 71 Loft. Total: 203 sq ft.

ELM® 26 FLOOR PLANS

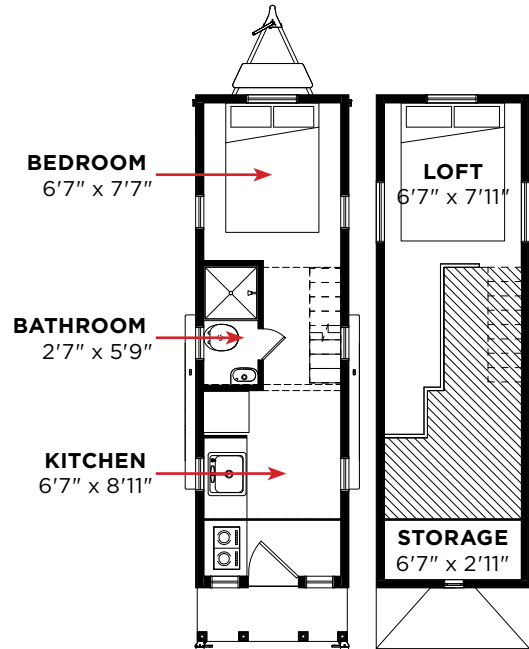


Adjustments are made through the design process affecting the overall layout. All dimensions are approximate.



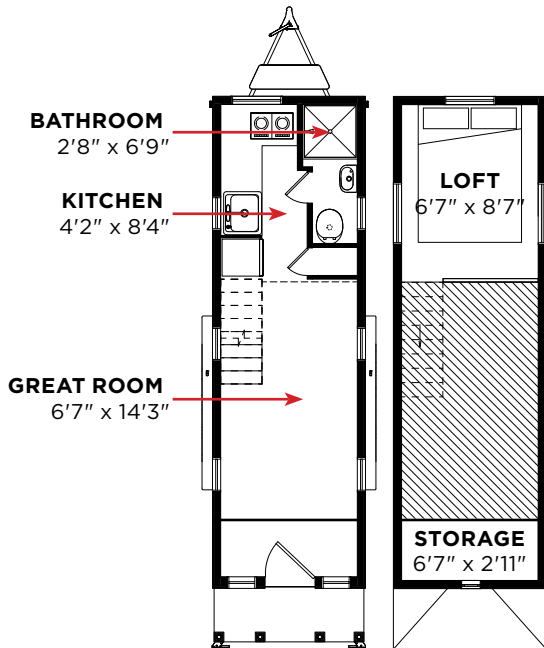
EQUATOR

176 sq ft + 76 Loft. Total: 252 sq ft.



HORIZON

176 sq ft + 76 Loft. Total: 252 sq ft.



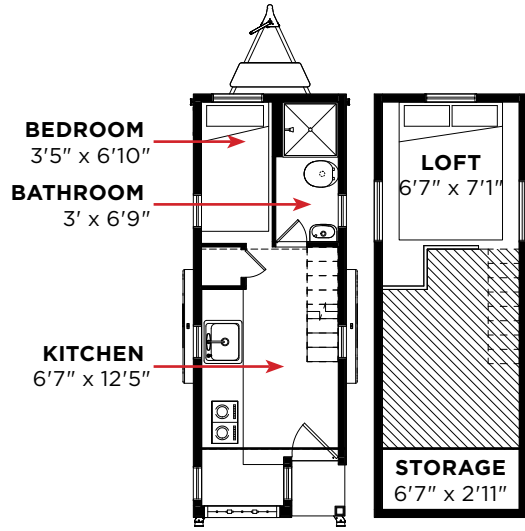
OVERLOOK

176 sq ft + 94 Loft. Total: 270 sq ft.

CYPRESS® 20 FLOOR PLANS

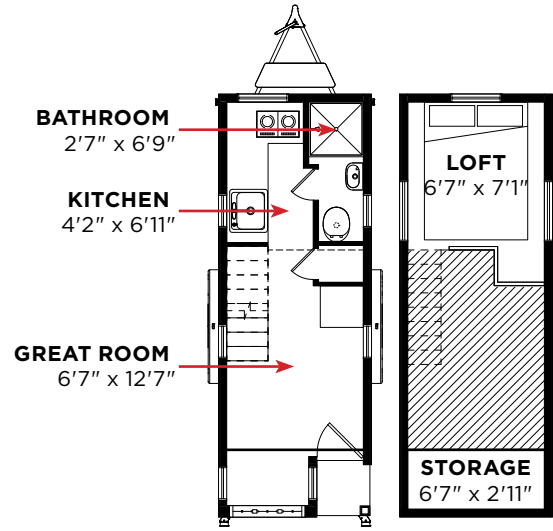


Adjustments are made through the design process affecting the overall layout. All dimensions are approximate.



EQUATOR

145 sq ft + 71 Loft. Total: 216 sq ft.



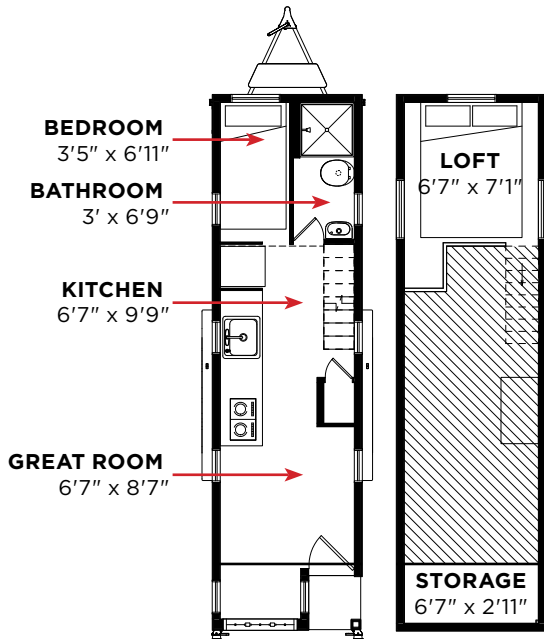
OVERLOOK

145 sq ft + 71 Loft. Total: 216 sq ft.

CYPRESS® 26 FLOOR PLANS

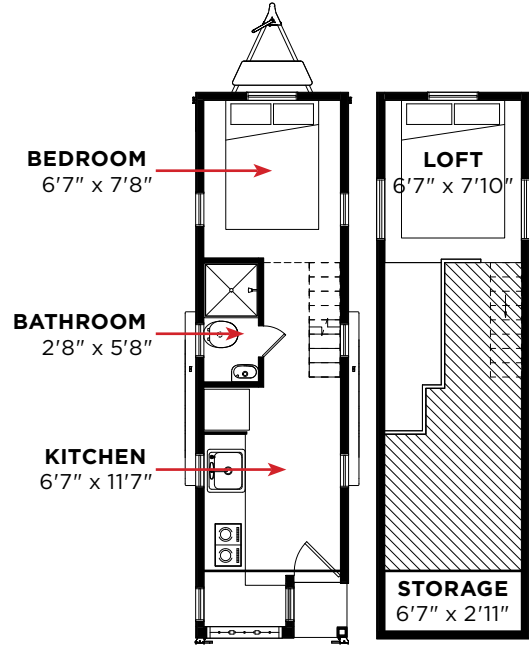


Adjustments are made through the design process affecting the overall layout. All dimensions are approximate.



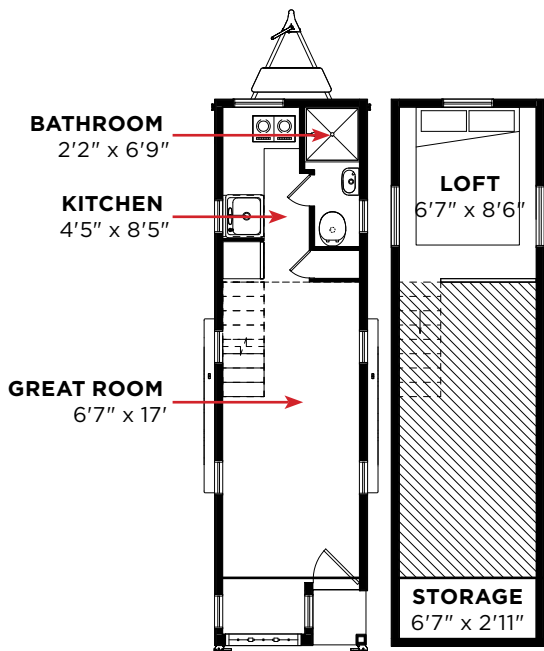
EQUATOR

189 sq ft + 71 Loft. Total: 260 sq ft.



HORIZON

189 sq ft + 71 Loft. Total: 260 sq ft.



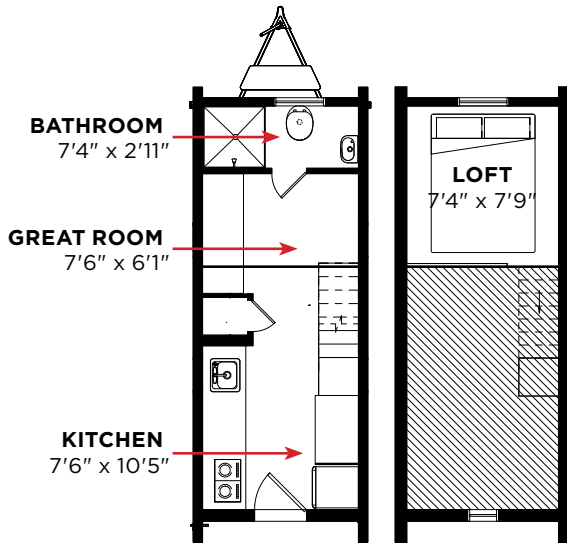
OVERLOOK

189 sq ft + 45 Loft. Total: 234 sq ft.

FARALLON™ 20 FLOOR PLANS

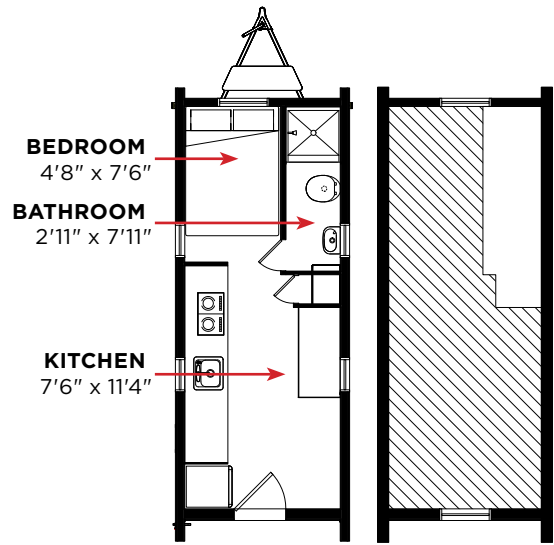


Adjustments are made through the design process affecting the overall layout. All dimensions are approximate.



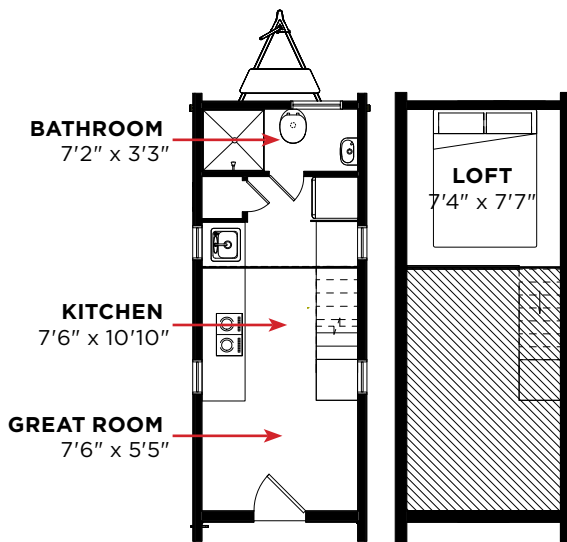
ALTA

170 sq ft + 85 Loft. Total: 255 sq ft.



PACIFIC

170 sq ft + 43 Loft. Total: 213 sq ft.



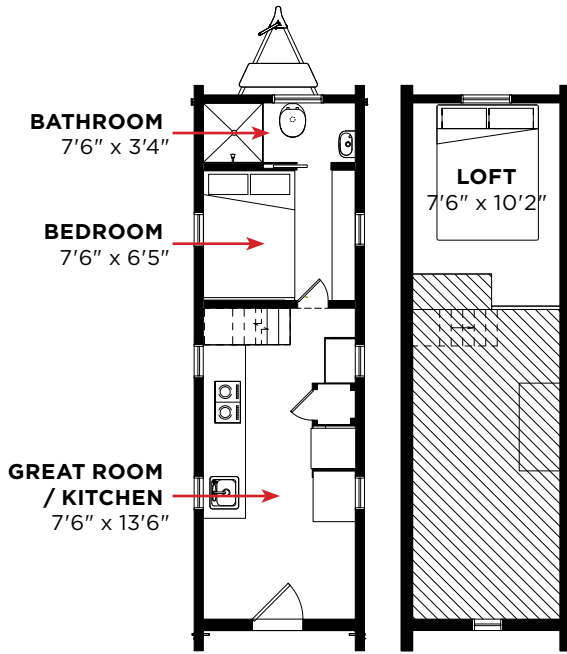
VISTA

170 sq ft + 83 Loft. Total: 253 sq ft.

FARALLON™ 26 FLOOR PLANS

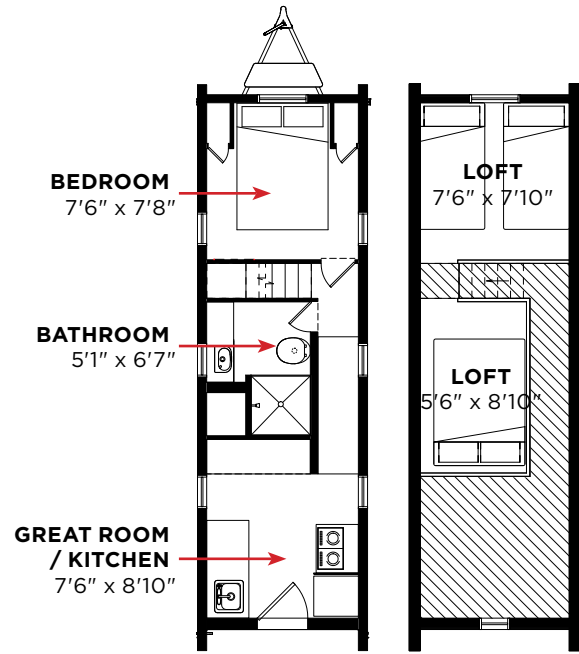


Adjustments are made through the design process affecting the overall layout. All dimensions are approximate.



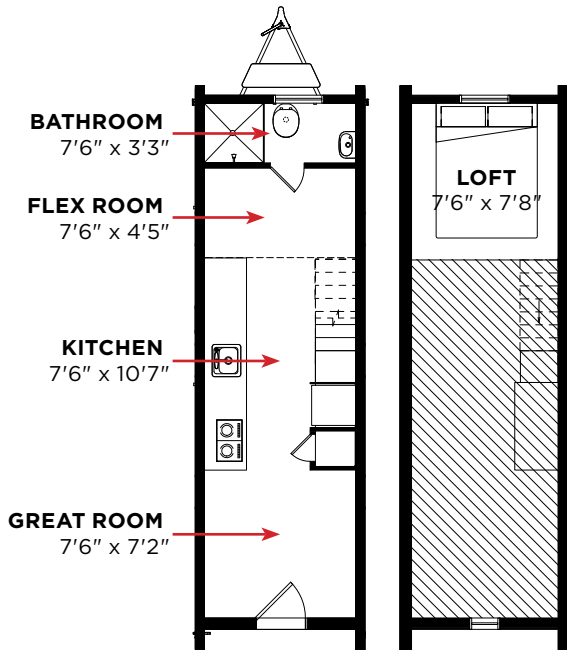
ALTA

221 sq ft + 80 Loft. Total: 301 sq ft.



PACIFIC

221 sq ft + 47 Loft. Total: 268 sq ft.



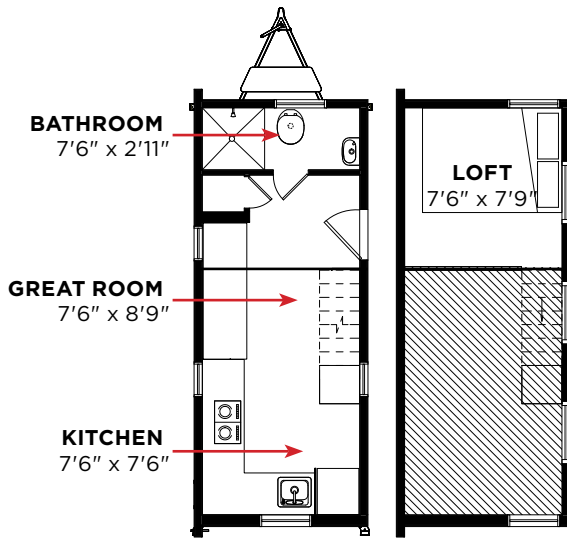
VISTA

221 sq ft + 123 Loft. Total: 344 sq ft.

ROANOKE™ 20 FLOOR PLANS

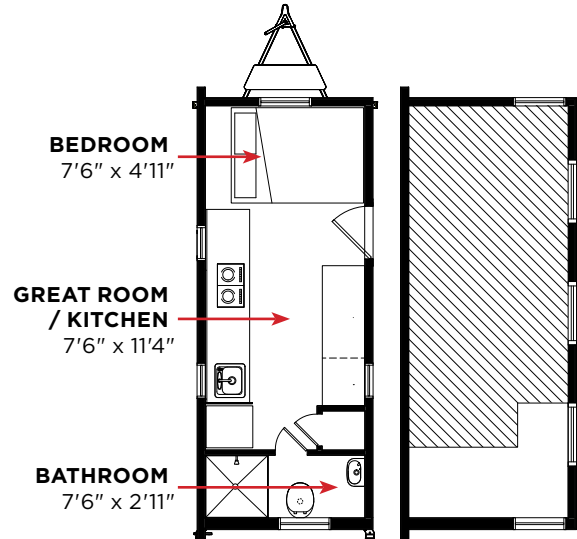


Adjustments are made through the design process affecting the overall layout. All dimensions are approximate.



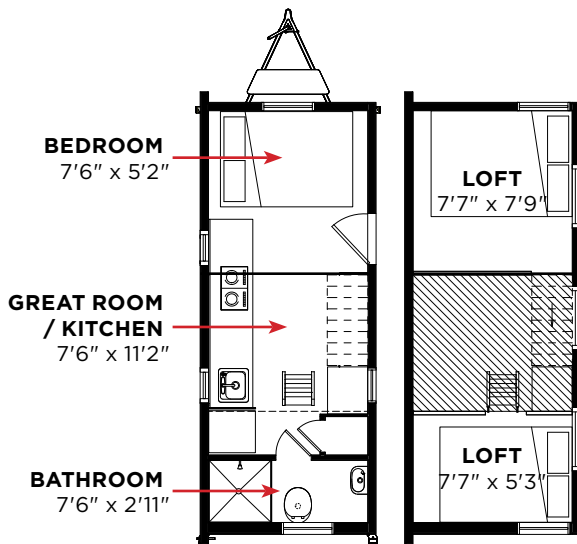
ALTA

170 sq ft + 85 Loft. Total: 255 sq ft.



PACIFIC

170 sq ft + 43 Loft. Total: 213 sq ft.



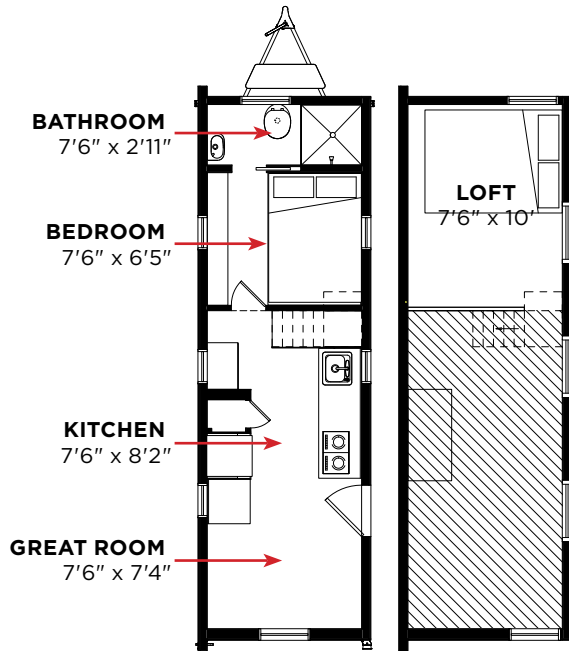
VISTA

170 sq ft + 83 Loft. Total: 253 sq ft.

ROANOKE™ 26 FLOOR PLANS

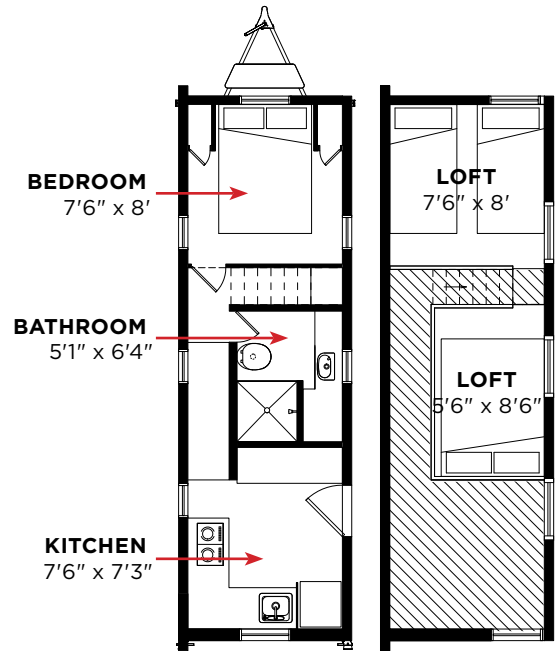


Adjustments are made through the design process affecting the overall layout. All dimensions are approximate.



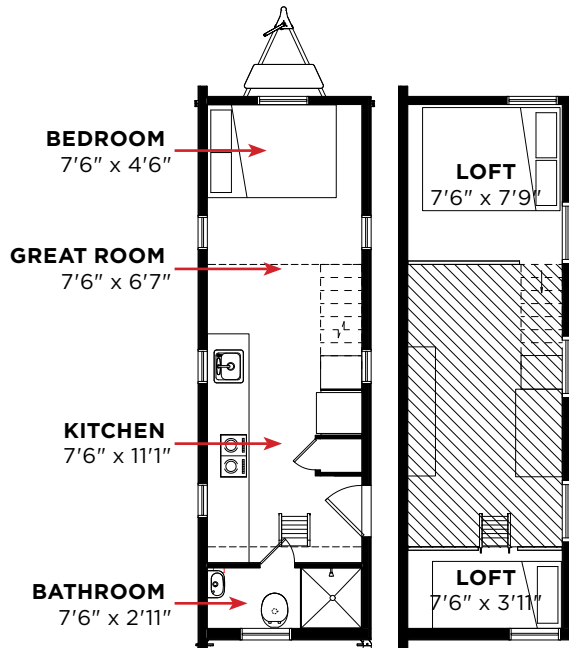
ALTA

221 sq ft + 80 Loft. Total: 301 sq ft.



PACIFIC

221 sq ft + 121 Loft. Total: 342 sq ft.



VISTA

221 sq ft + 123 Loft. Total: 344 sq ft.



BEKO STAR

Wash Time

Power Save Spin Speed Soft Level Daily

Extra Rinse

Custom Cycle

100% DRIABLE

- Cotton/Normal
- Heavy Duty
- Permanent Press
- Delicate
- Hand Wash/Wool
- Baby Wear
- Speed Wash
- Self Clean
- Rinse&Spin
- Spin
- 50 Min Preset
- Cotton/Normal **Dry**

Power

Start/Pause

Hold 3 Sec. Add Garment

TOWING

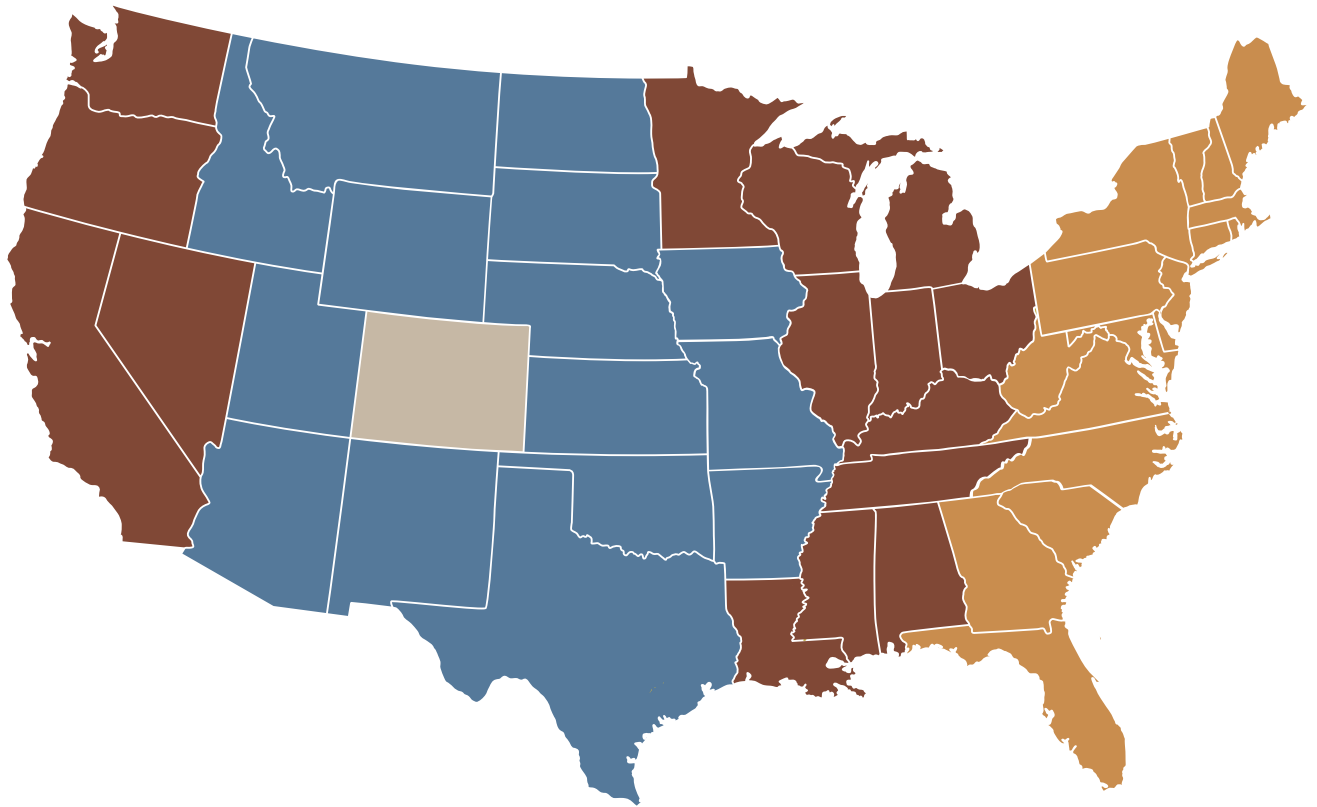


MODEL	DRY WEIGHT	GVWR	TONGUE WEIGHT	TRUCK SIZE	HITCH TYPE	COMPATIBLE BALL SIZE
Classic 20'	8,000	10,000	880-1,485	3/4 Ton	Class V	2-5/16"
Classic 26'	10,500	15,000	1,050-2,250	1 Ton	Class V	2-5/16"
Modern 20'	8,800	10,000	1,000-1,800	3/4 Ton	Class V	2-5/16"
Modern 26'	12,500	15,000	1,050-2,250	1 Ton	Class V	2-5/16"

Our Tiny House RVs can be towed by a standard 3/4 or 1 ton truck depending on the size of your RV, and do not require any permits to tow. Trucks can easily be rented or purchased depending on your transportation needs. Our Tiny House RV models are Certified RVs and have a street legal width of 8'6" and height of 13'4". Remember that your Tiny House RV should be titled, licensed and insured to tow legally as an RV. To prepare for towing, above are specifications about Tiny House RV weights and minimum tow vehicle requirements.

Tumbleweed Tiny House RVs weights vary by size. Dry weight refers to the structure and trailer combined weight. GVWR or gross vehicle weight rating refers to maximum allowable weight of the combined Tiny House RV, trailer and your personal belongings. Tongue weight refers to weight carried by the hitch rather than the wheels of the trailer. Insufficient tongue weight is the primary reason it's difficult for 1/2 ton trucks to tow Tumbleweeds. The compatible ball size is 2-5/16" for all Tumbleweed Tiny House RV trailers.

DELIVERY



\$500
Colorado

\$1,000
Arizona
Arkansas
Idaho
Iowa
Kansas
Missouri
Montana
Nebraska
New Mexico
North Dakota
Oklahoma
South Dakota
Texas
Utah
Wyoming

\$2,000
Alabama
California
Illinois
Indiana
Kentucky
Louisiana
Michigan
Minnesota
Mississippi
Nevada
Ohio
Oregon
Tennessee
Washington
Wisconsin

\$3,000
Connecticut
Delaware
Florida
Georgia
Maine
Maryland
Massachusetts
New Hampshire
New Jersey
New York
North Carolina
Pennsylvania
Rhode Island
South Carolina
Vermont
Virginia
West Virginia

Please inquire with your Tiny House Specialists on shipments outside the continental US.

FINANCING CHART

Tumbleweed works with multiple lenders to find the best loan for you. Options vary state by state and depending on your use, so please contact us and we can discuss the best options for you. You can reach us at support@tumbleweedhouses.com or give us a call at (877) 331-8469.

20% DOWN WITH A 15 YEAR LOAN

PRICE	5% INTEREST RATE	6% INTEREST RATE	7% INTEREST RATE
\$62,950	\$398	\$425	\$453
\$63,950	\$405	\$432	\$460
\$64,950	\$411	\$438	\$467
\$65,950	\$417	\$445	\$474
\$66,950	\$424	\$452	\$481
\$67,950	\$430	\$459	\$489
\$68,950	\$436	\$465	\$496
\$69,950	\$443	\$472	\$503
\$70,950	\$449	\$479	\$510
\$71,950	\$455	\$486	\$517
\$72,950	\$462	\$492	\$525
\$73,950	\$468	\$499	\$532
\$74,950	\$474	\$506	\$539
\$75,950	\$480	\$513	\$546
\$76,950	\$487	\$519	\$553
\$77,950	\$493	\$526	\$561
\$78,950	\$499	\$533	\$568
\$79,950	\$506	\$540	\$575
\$80,950	\$512	\$546	\$582
\$81,950	\$518	\$553	\$589

UPGRADE ESTIMATOR PER MONTH

+\$50	\$0.32	\$0.34	\$0.36
+\$100	\$0.63	\$0.68	\$0.72
+\$1,000	\$6.33	\$6.75	\$7.19

HOW MUCH EXTRA WILL IT COST PER MONTH?

Stairs w/drawers	\$15.82	\$16.88	\$17.98
Washer/Dryer	\$11.39	\$12.15	\$12.94
Propane w/ 50A	\$18.98	\$20.25	\$21.57
Oven	\$5.06	\$5.40	\$5.75
Compost. Toilet	\$6.33	\$6.75	\$7.19

*Interest rates and terms vary in accordance with your lender and credit score.